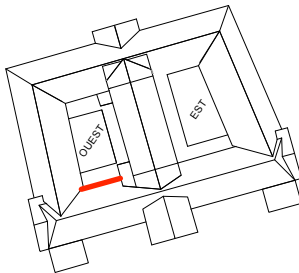
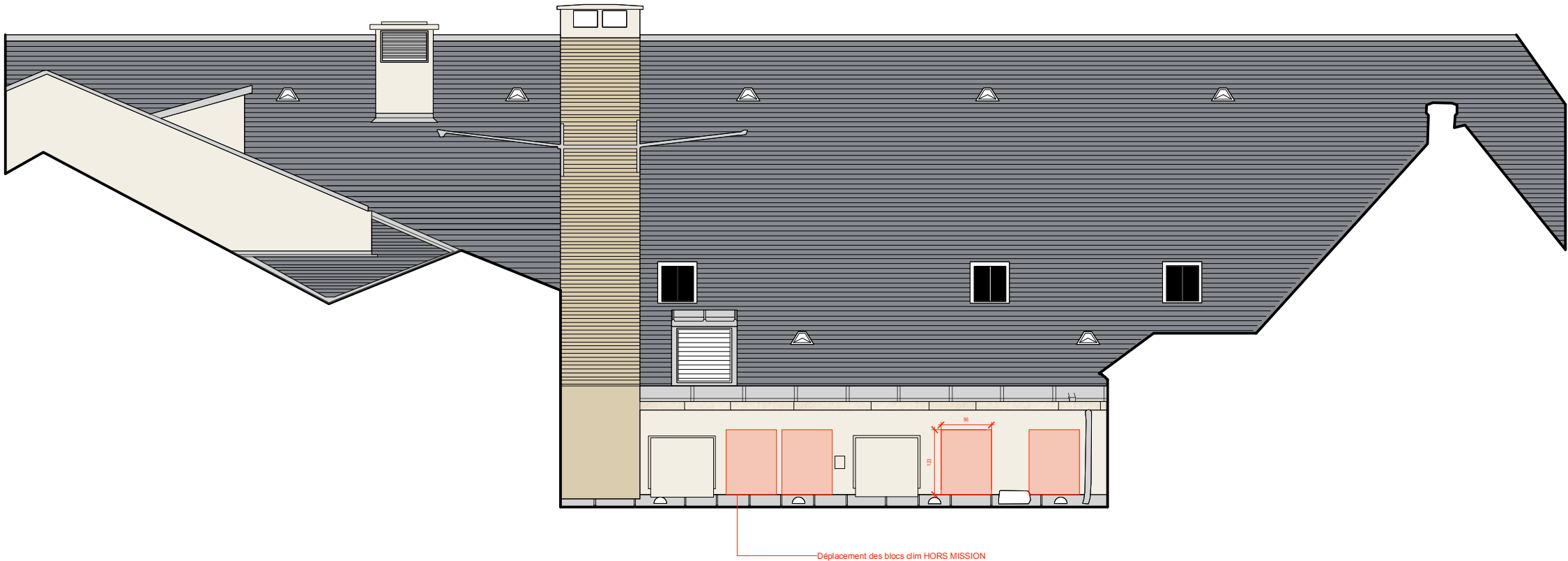
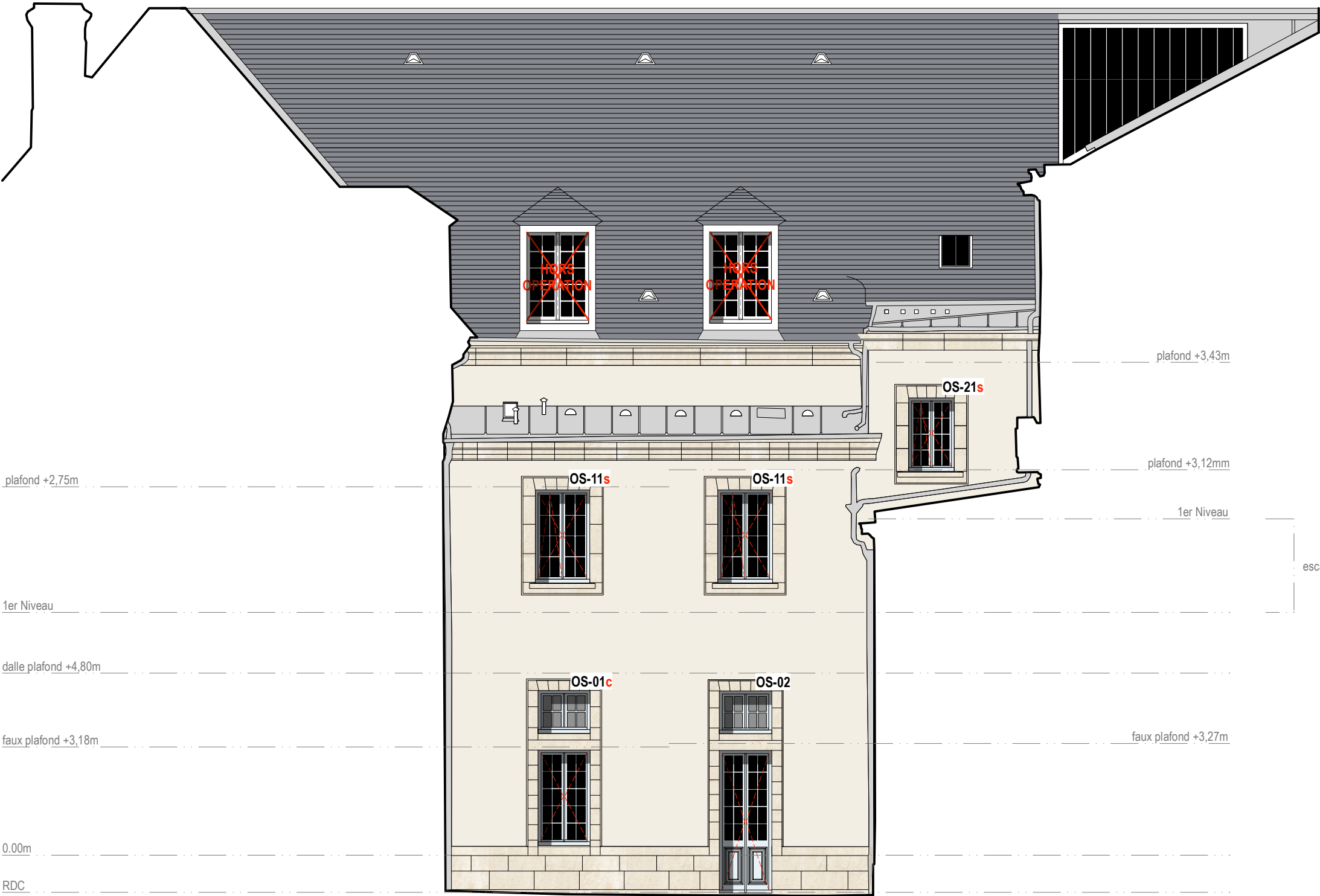


Verres opalescents C Crémone S Store





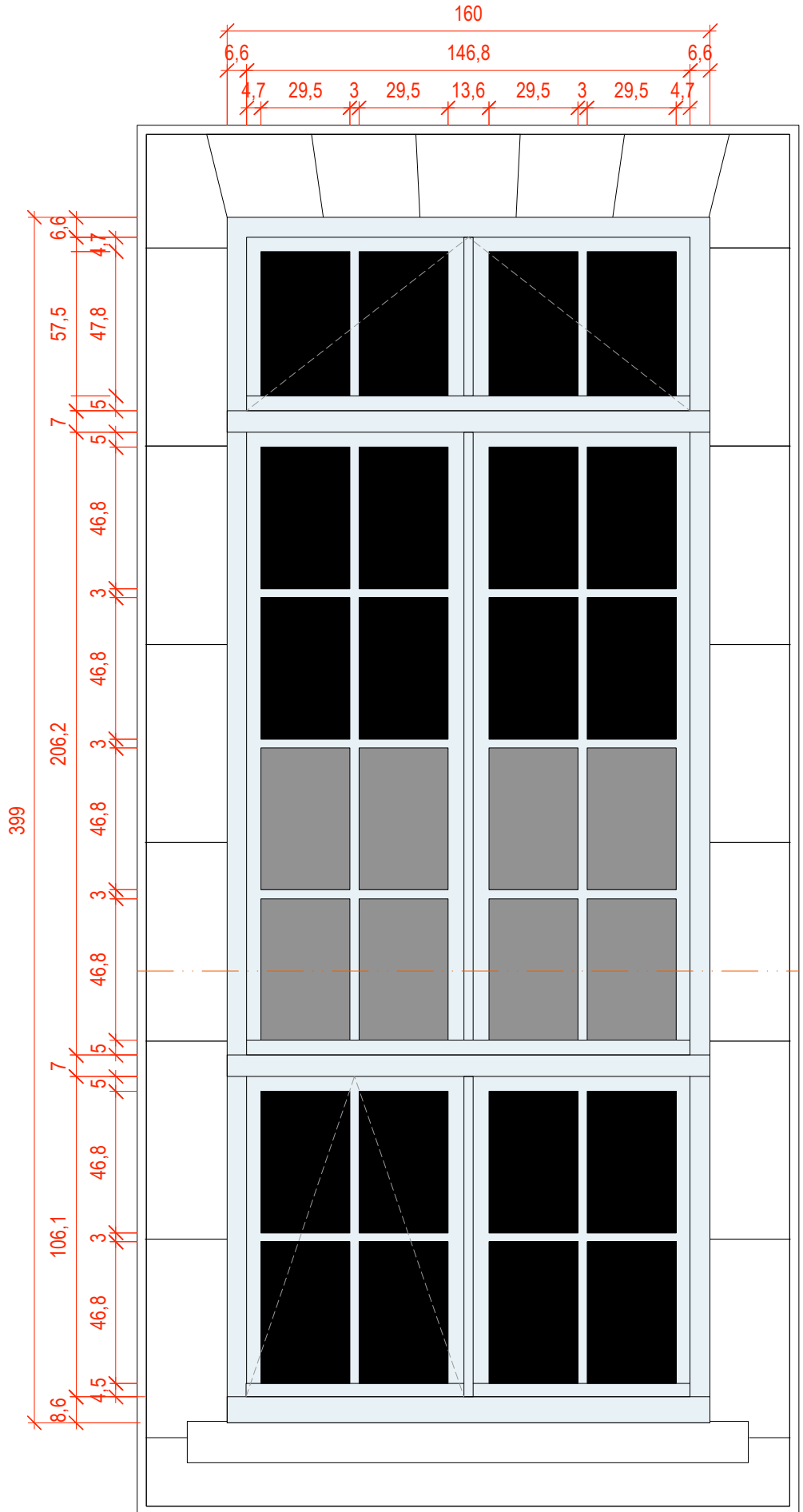
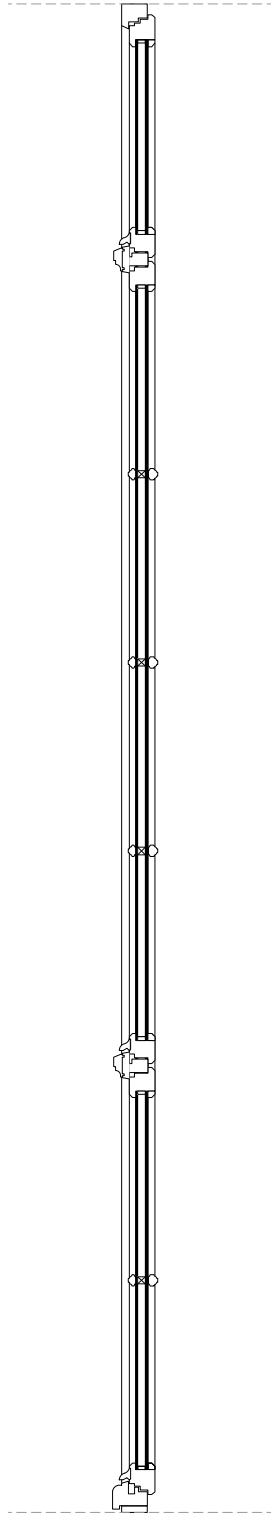
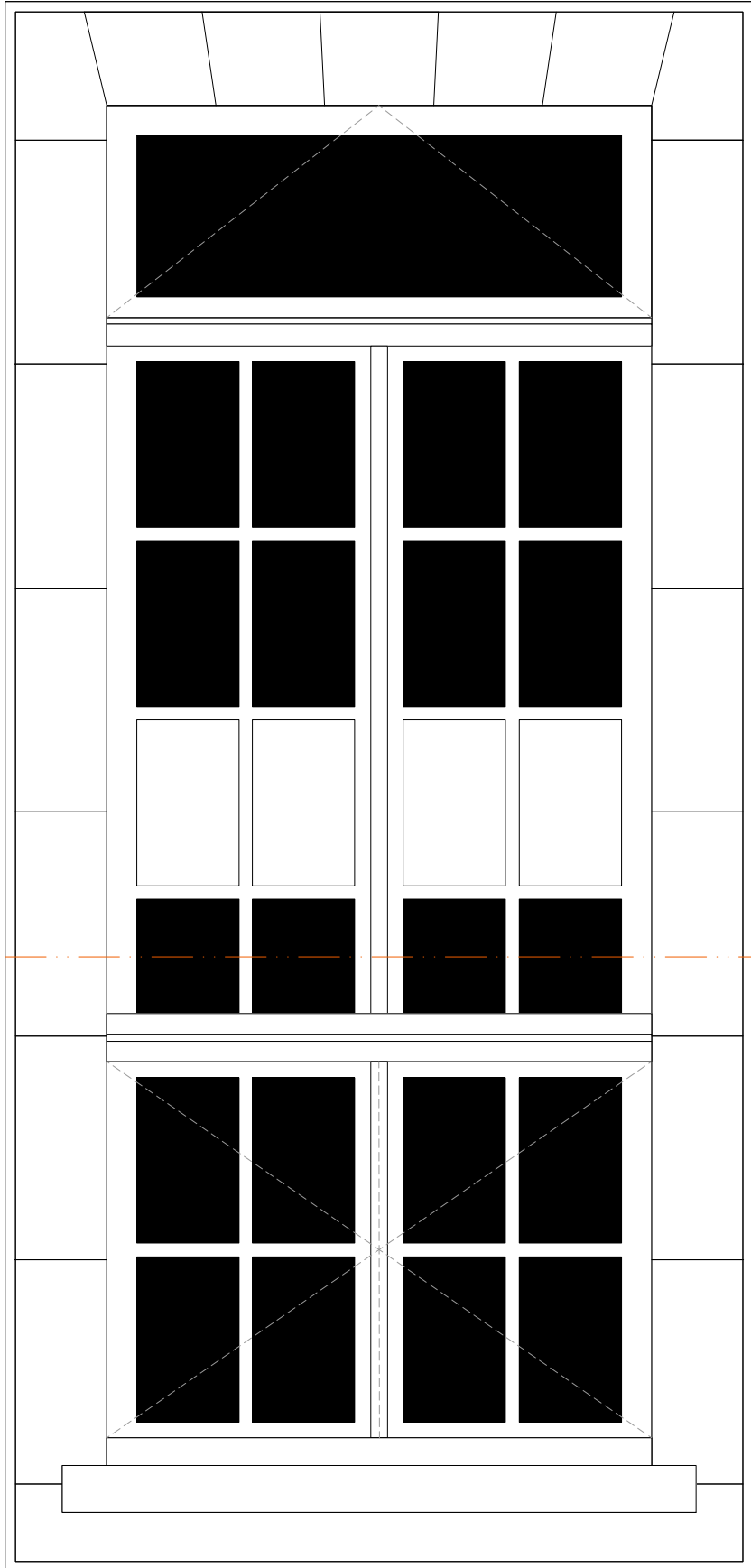


Verres opalescents C Crémone S Store

ETAT EXISTANT - COUR OUEST FACADE OUEST

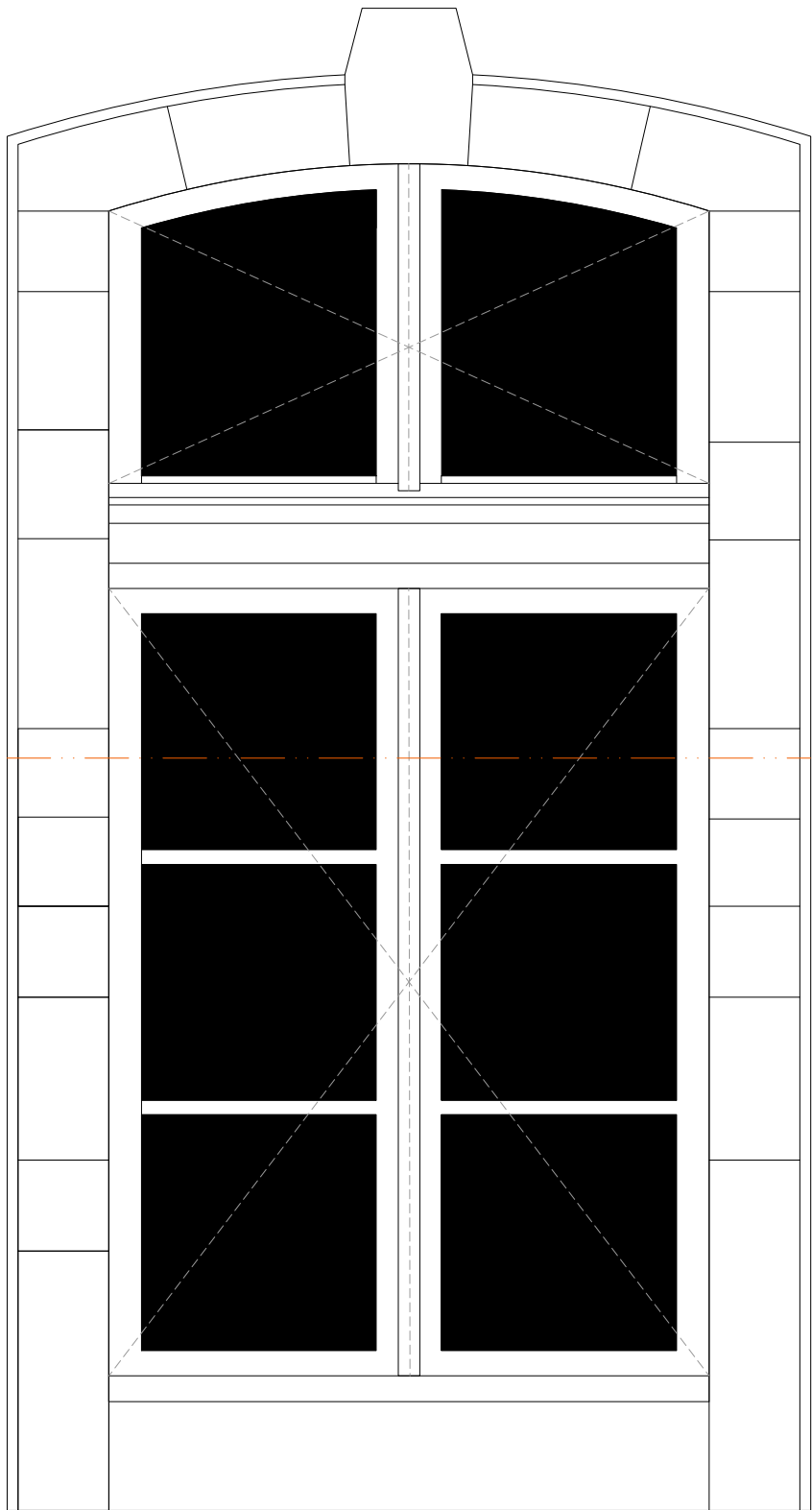
00-01 OB Châssis Bois
Teinte P0623 de Polycrom
Dimensions 160x399
Verres opalescents

ETAT PROJETE - COUR OUEST FACADE OUEST

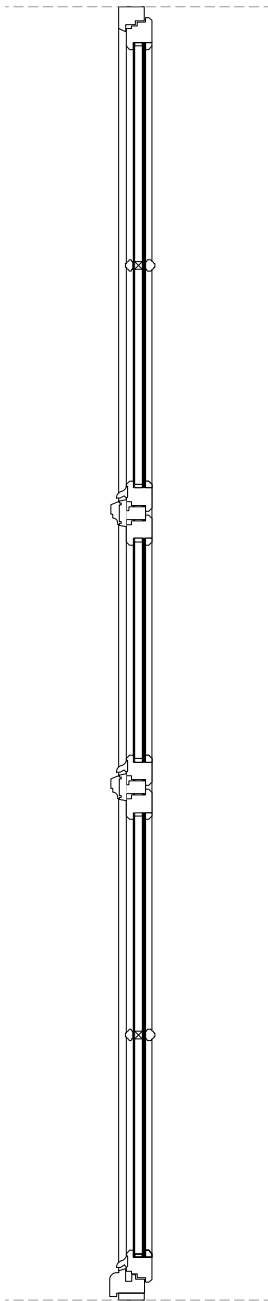


échelle 1/20e

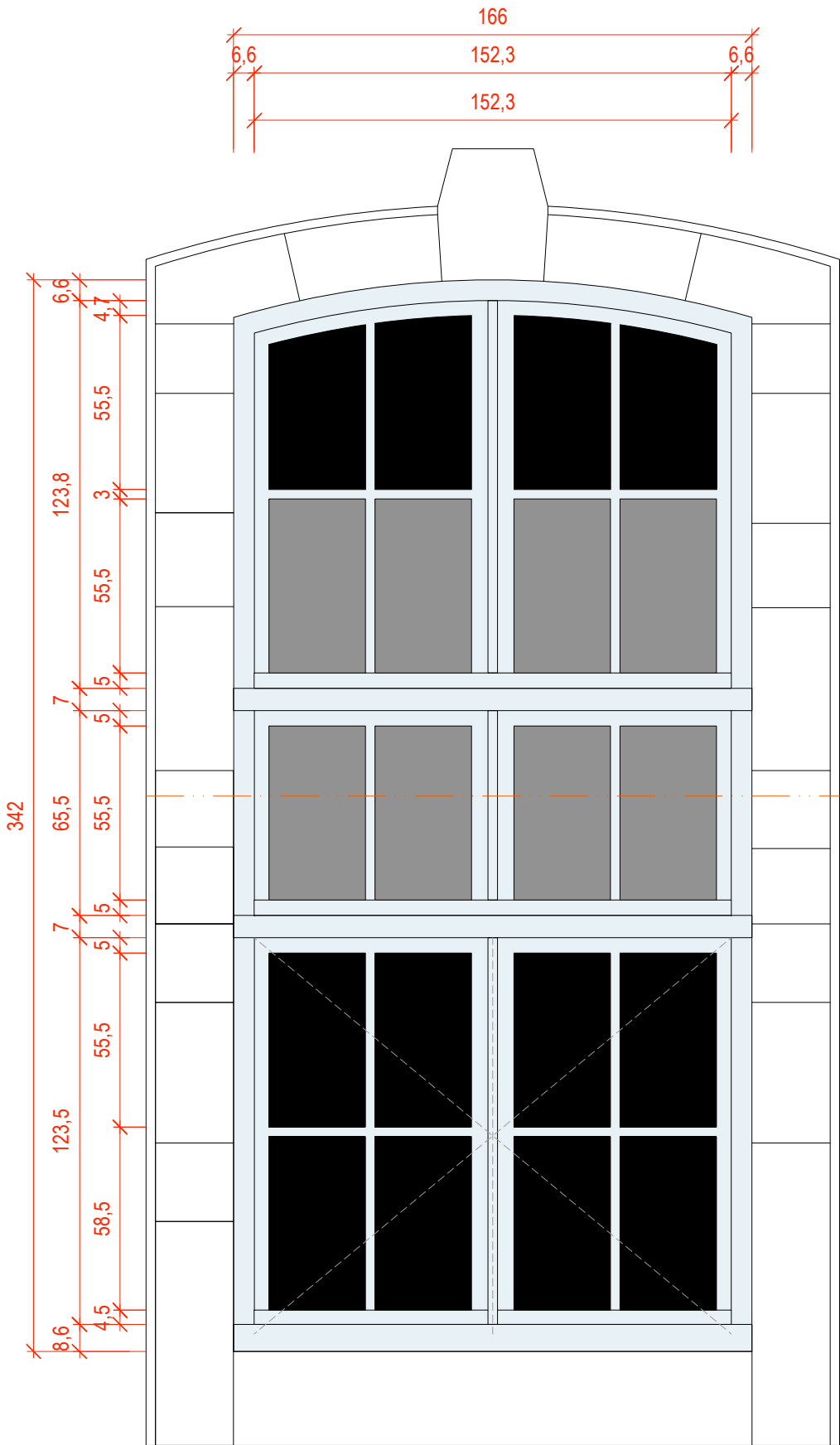
■ ETAT EXISTANT - COUR OUEST FACADE NORD



ON-01 OB Châssis Bois
Teinte P0623 de Polycrom
Dimenssions 166x342
Verres opalescents



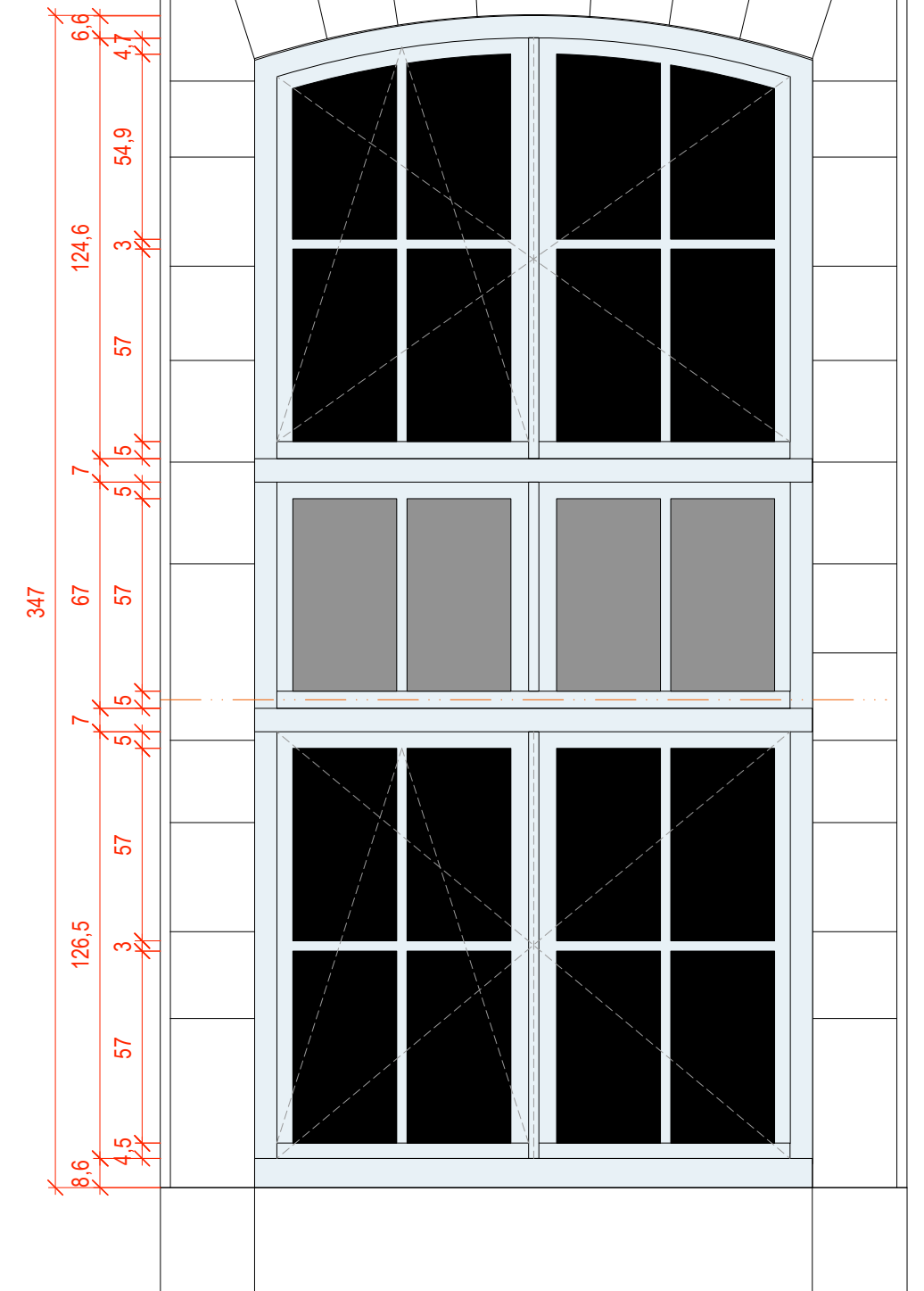
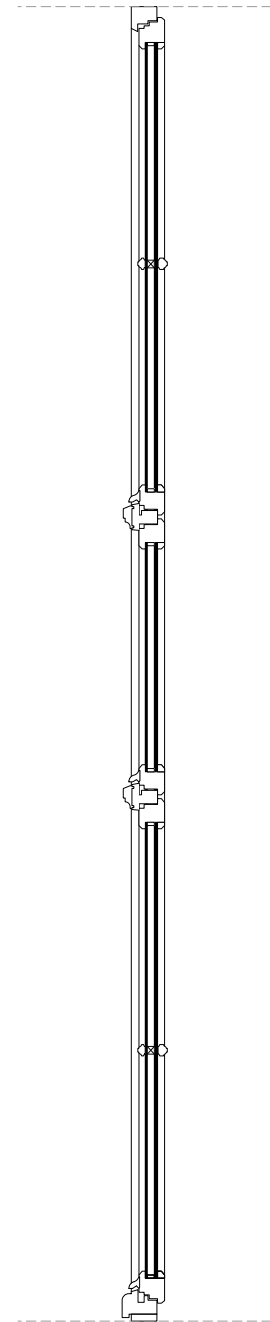
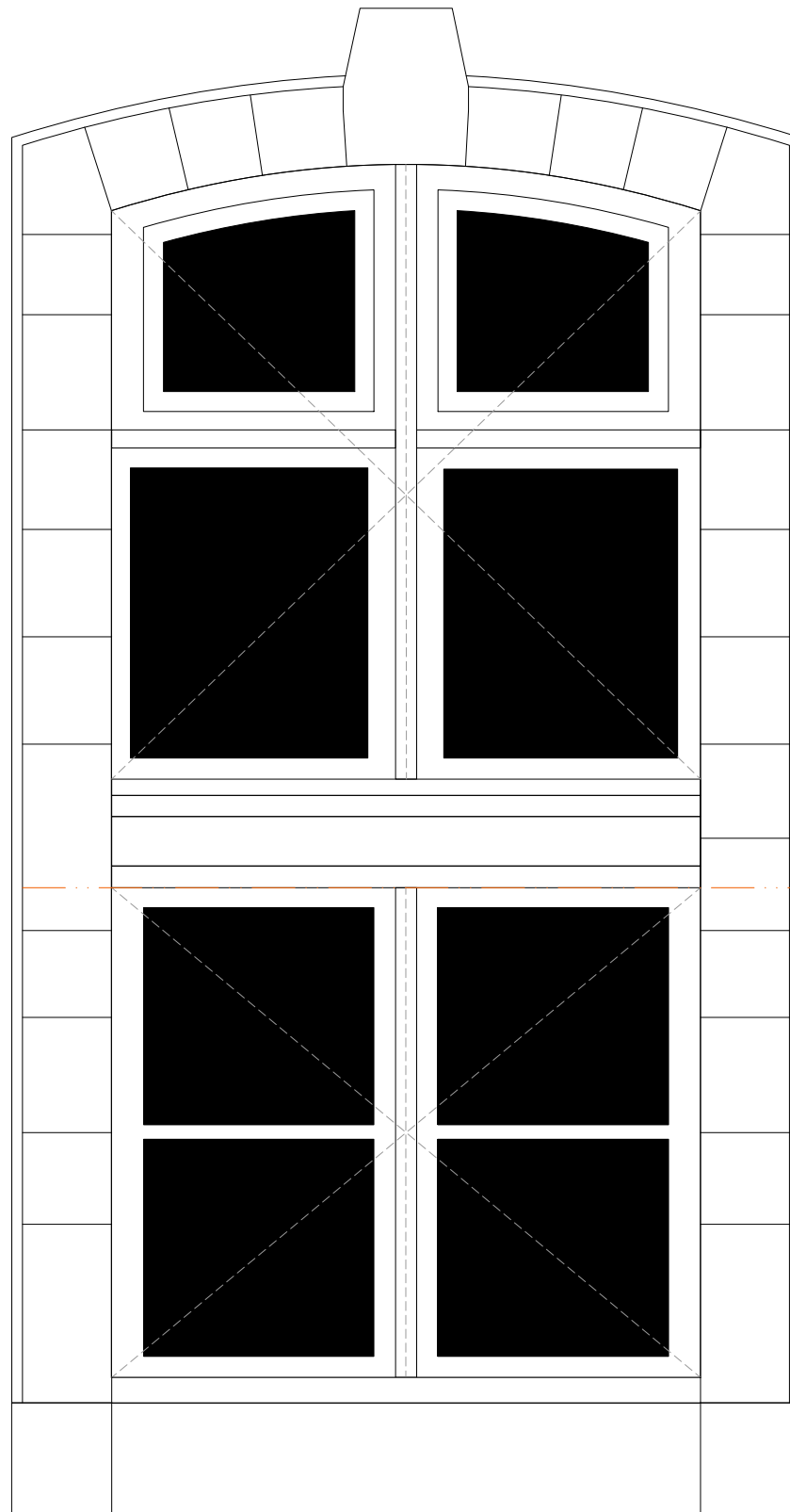
ETAT PROJETE - COUR OUEST FACADE NORD

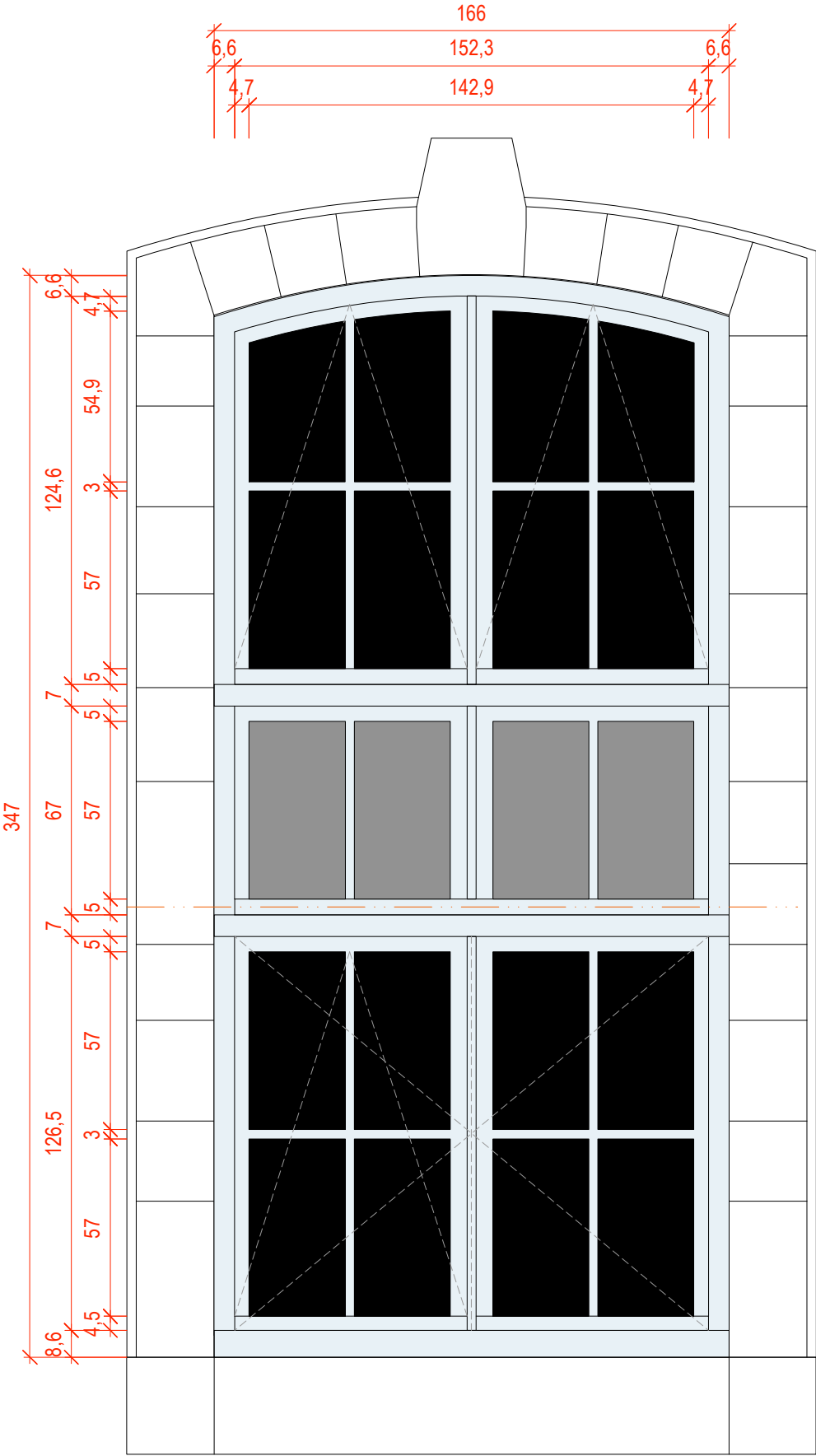
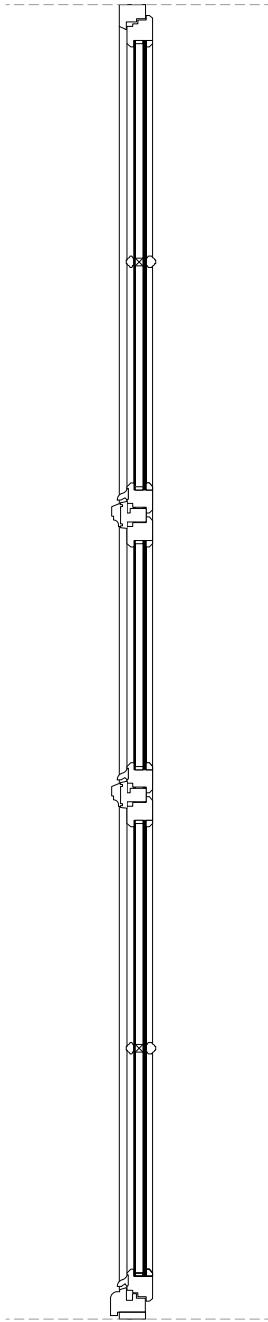
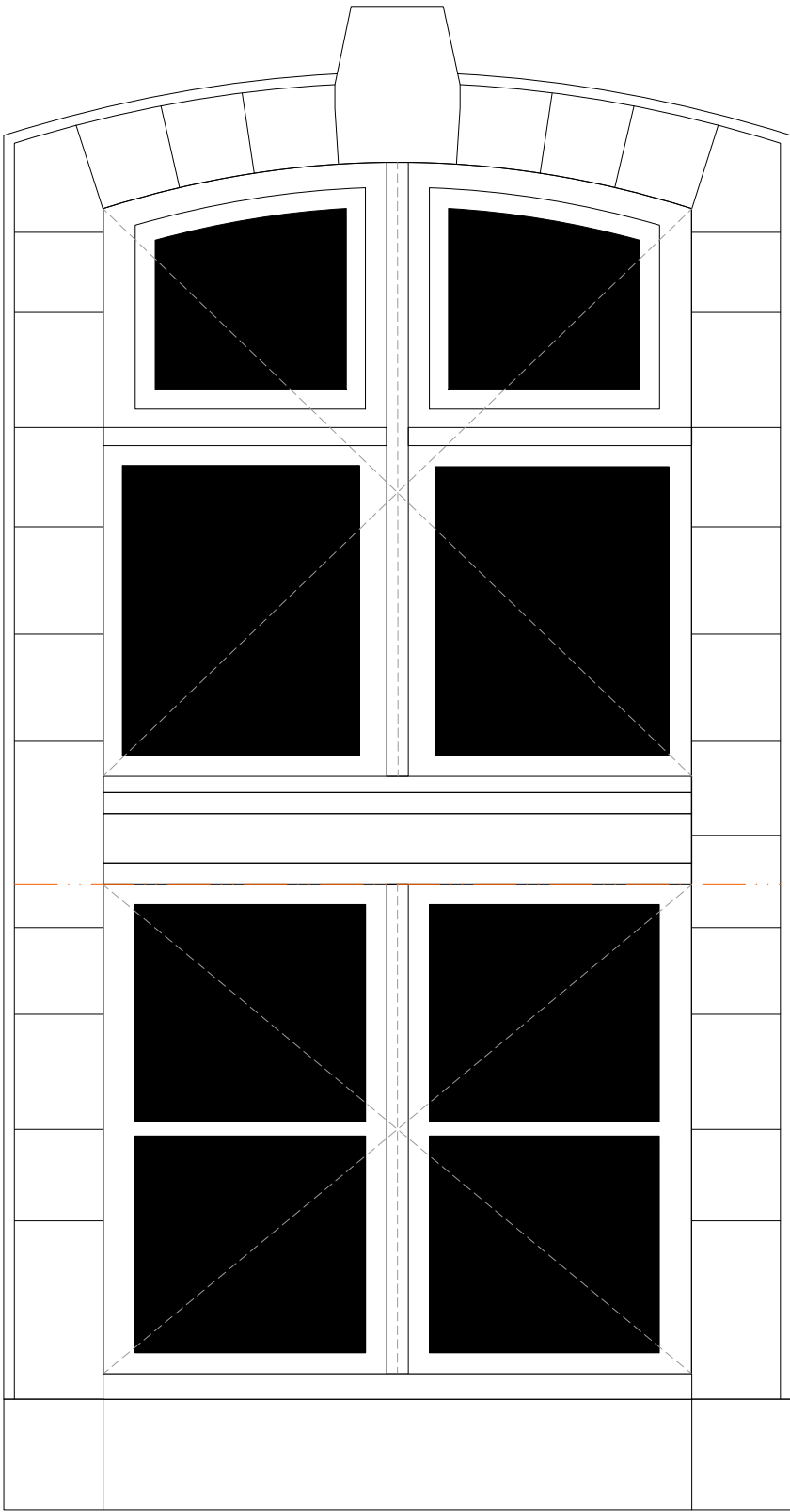


ETAT EXISTANT - COUR OUEST FACADE NORD

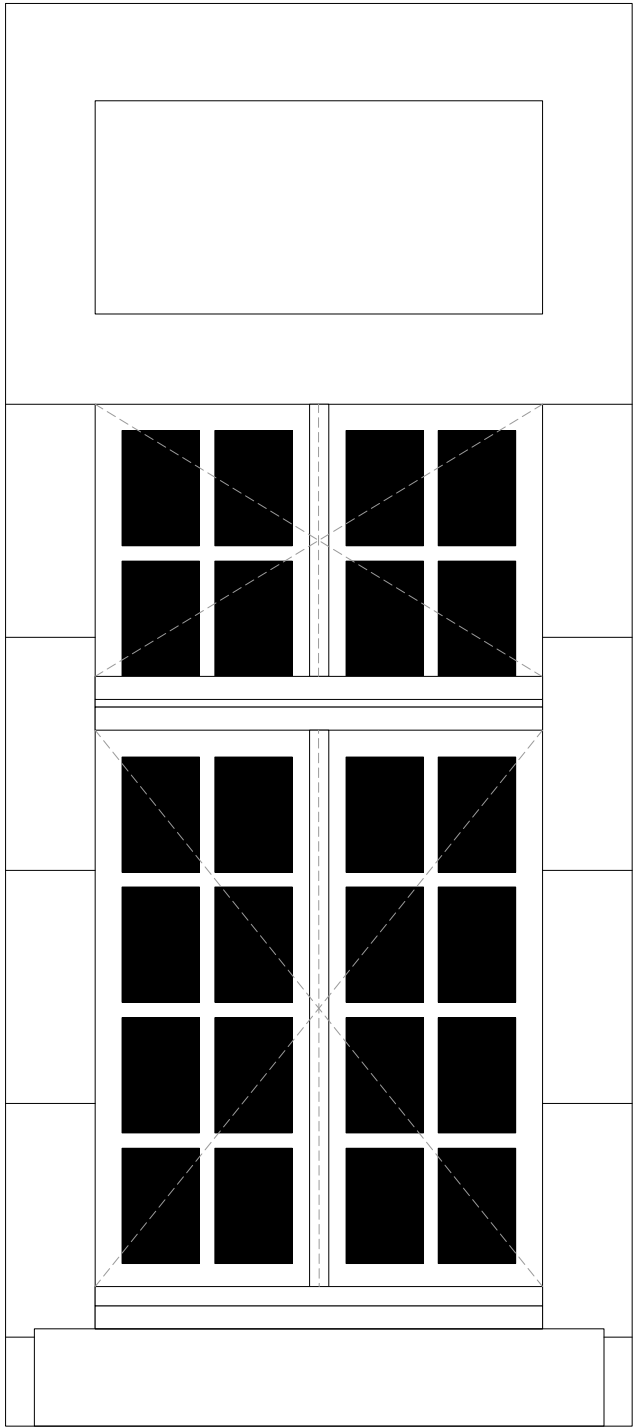
ON-11 OB Châssis Bois
Teinte P0623 de Polycrom
Dimensions 166x347
Verres opalescents

ETAT PROJETE - COUR OUEST FACADE NORD

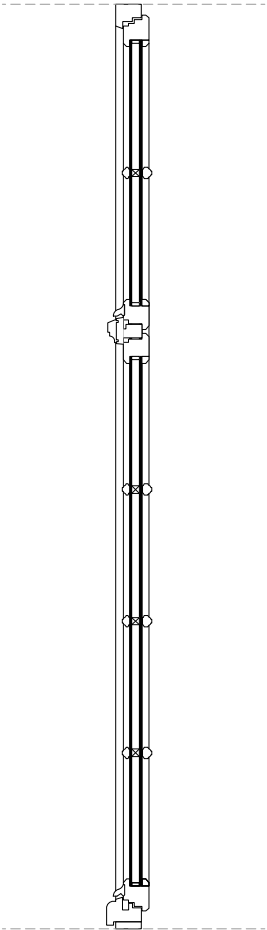




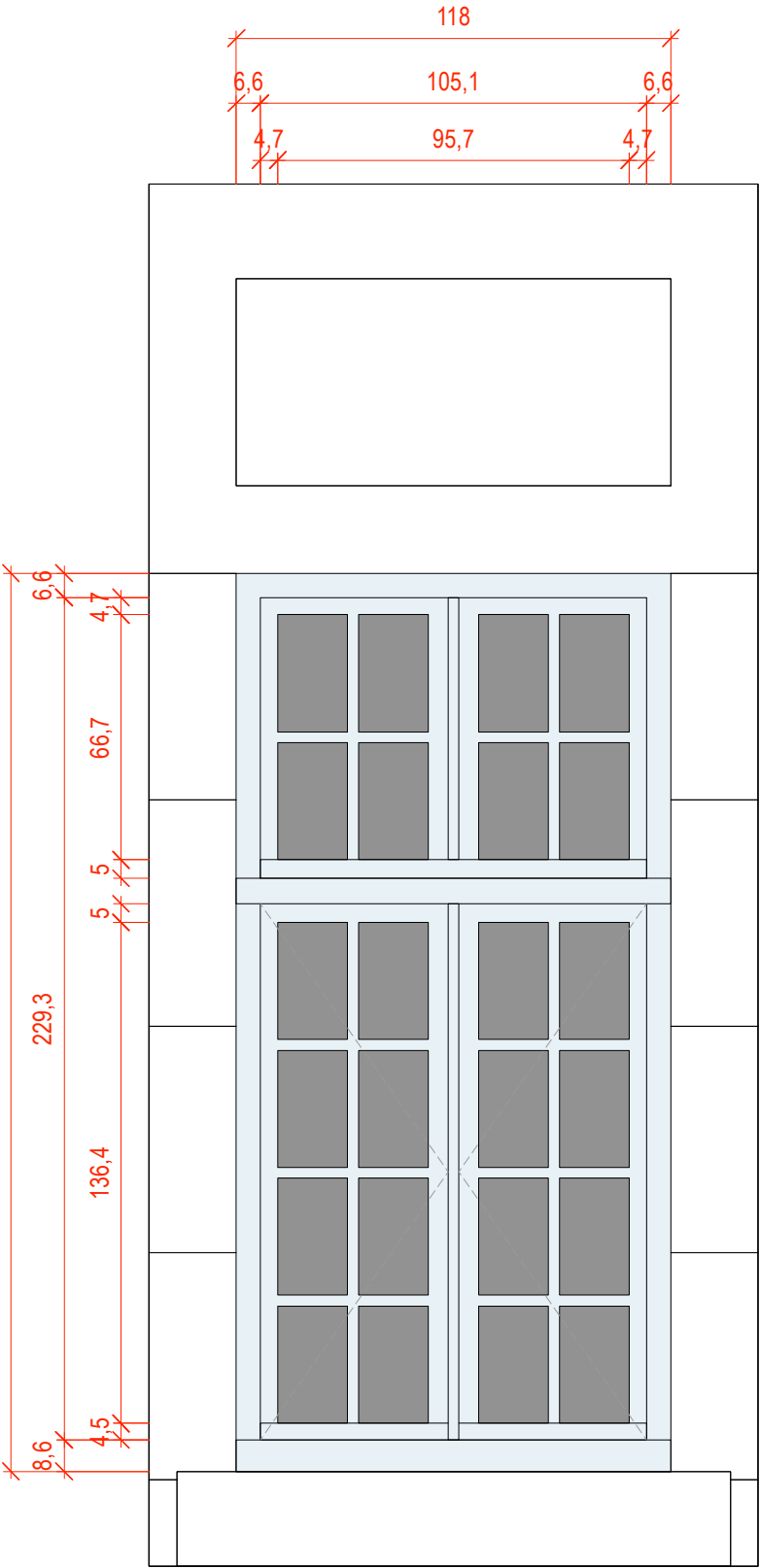
ETAT EXISTANT - COUR OUEST FACADE NORD

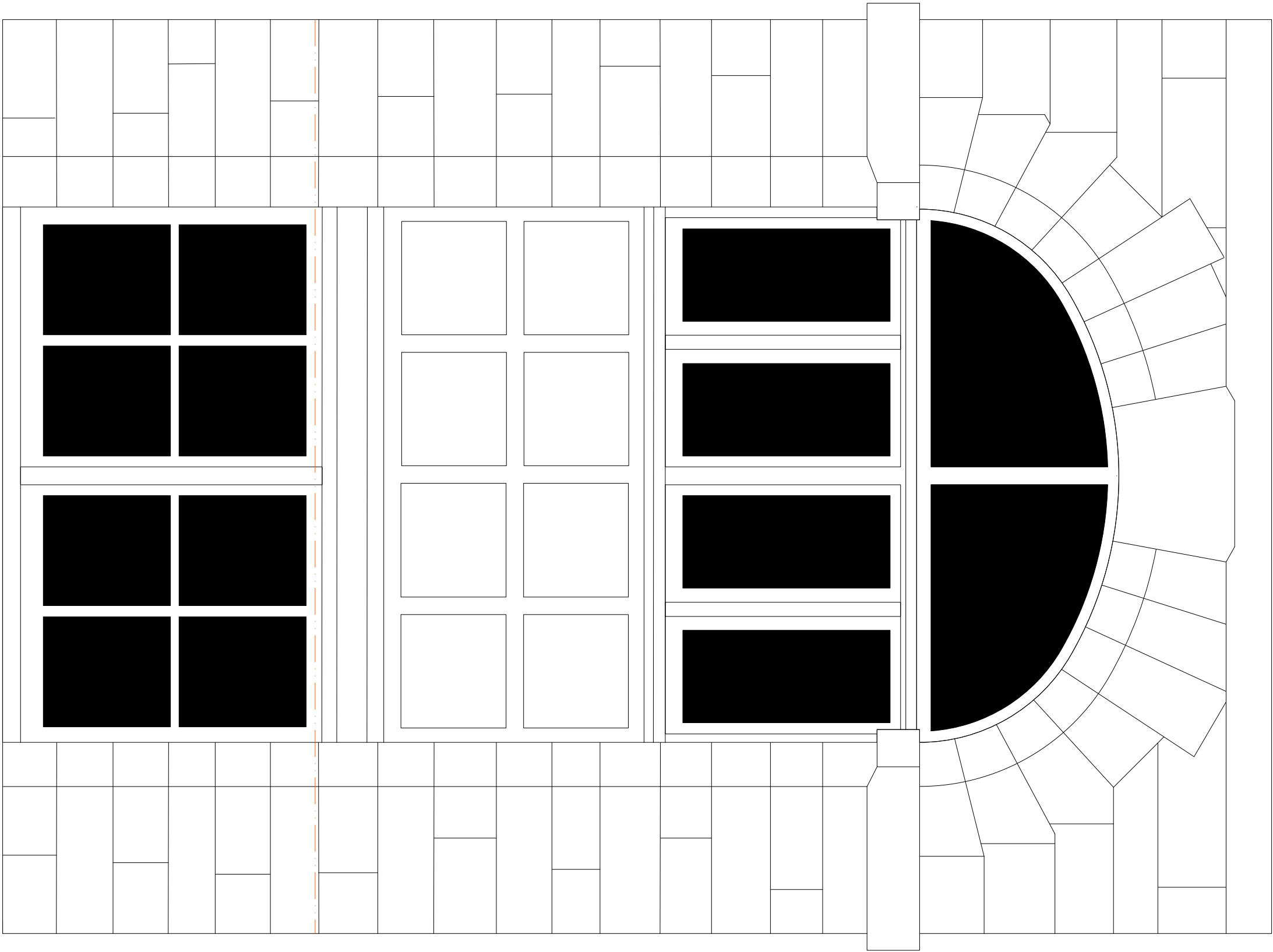


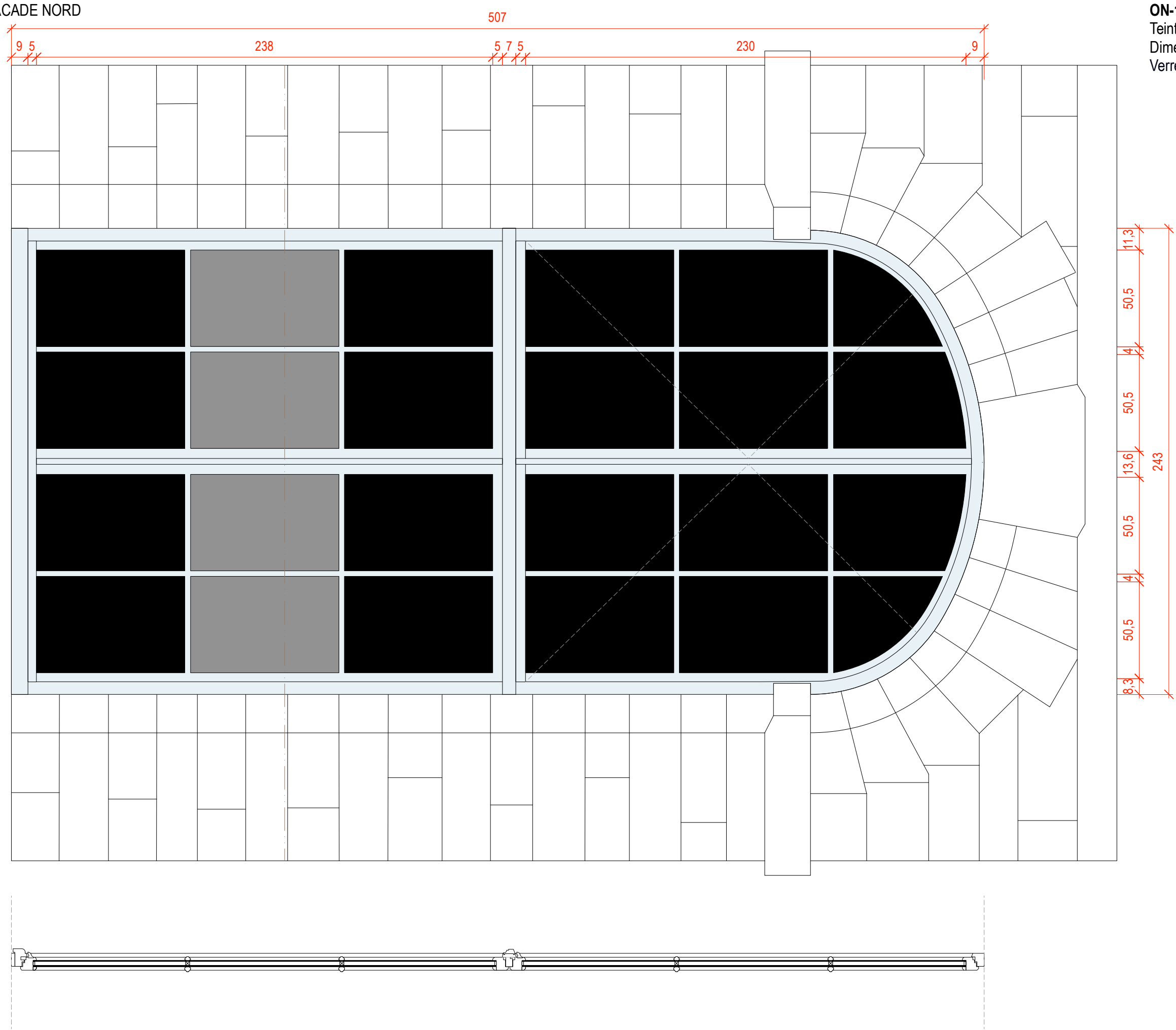
ON-21 OB Châssis Bois
Teinte P0623 de Polycrom
Dimensions 118x245
Film opalescents



ETAT PROJETE - COUR OUEST FACADE NORD

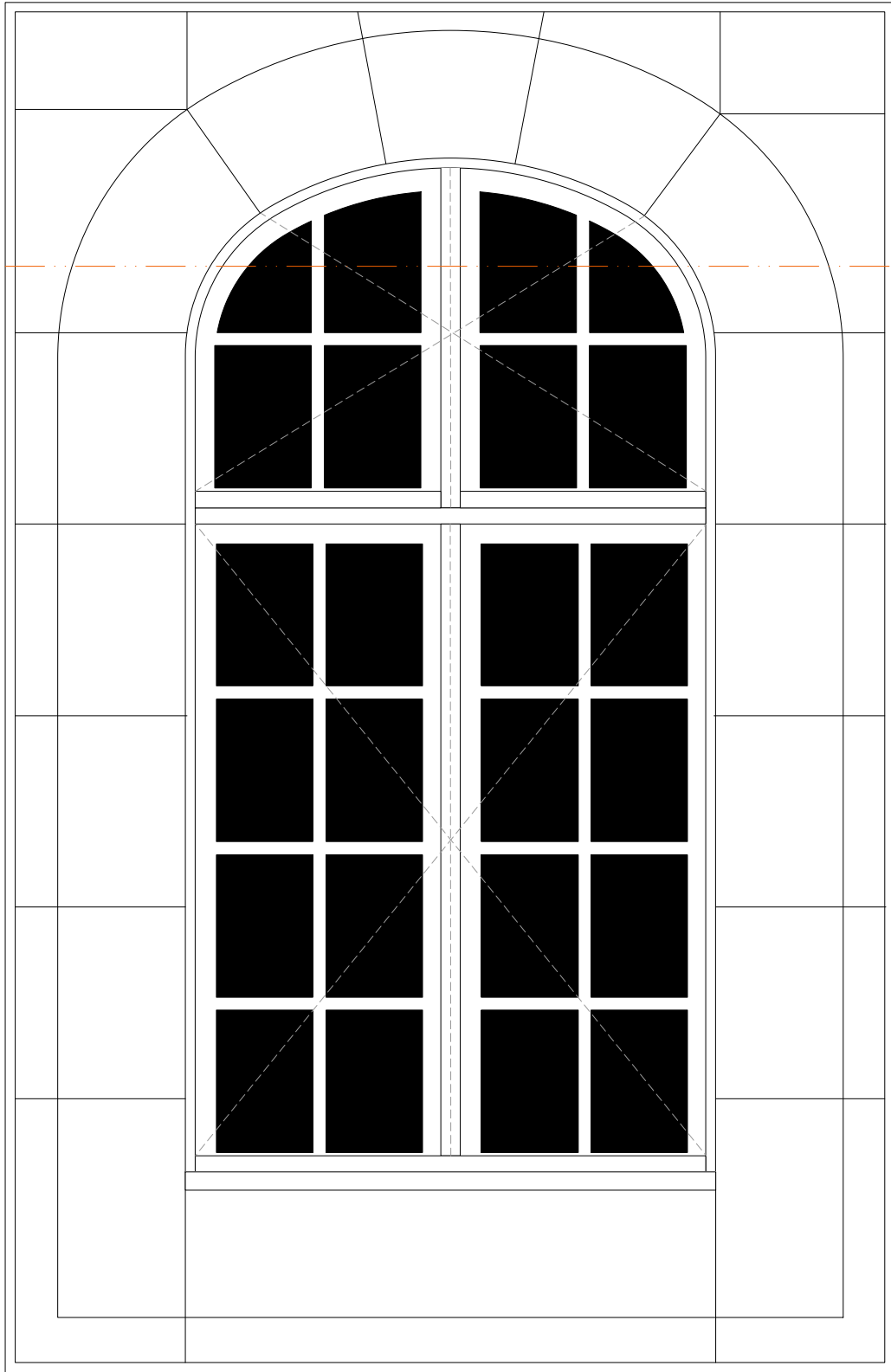




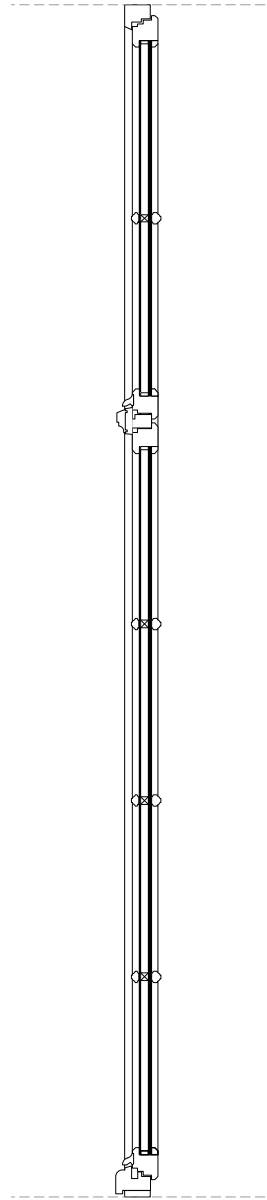


ON-12 OB Châssis Bois
Teinte P0623 de Polycrom
Dimenssions 243x507
Verres opalescents

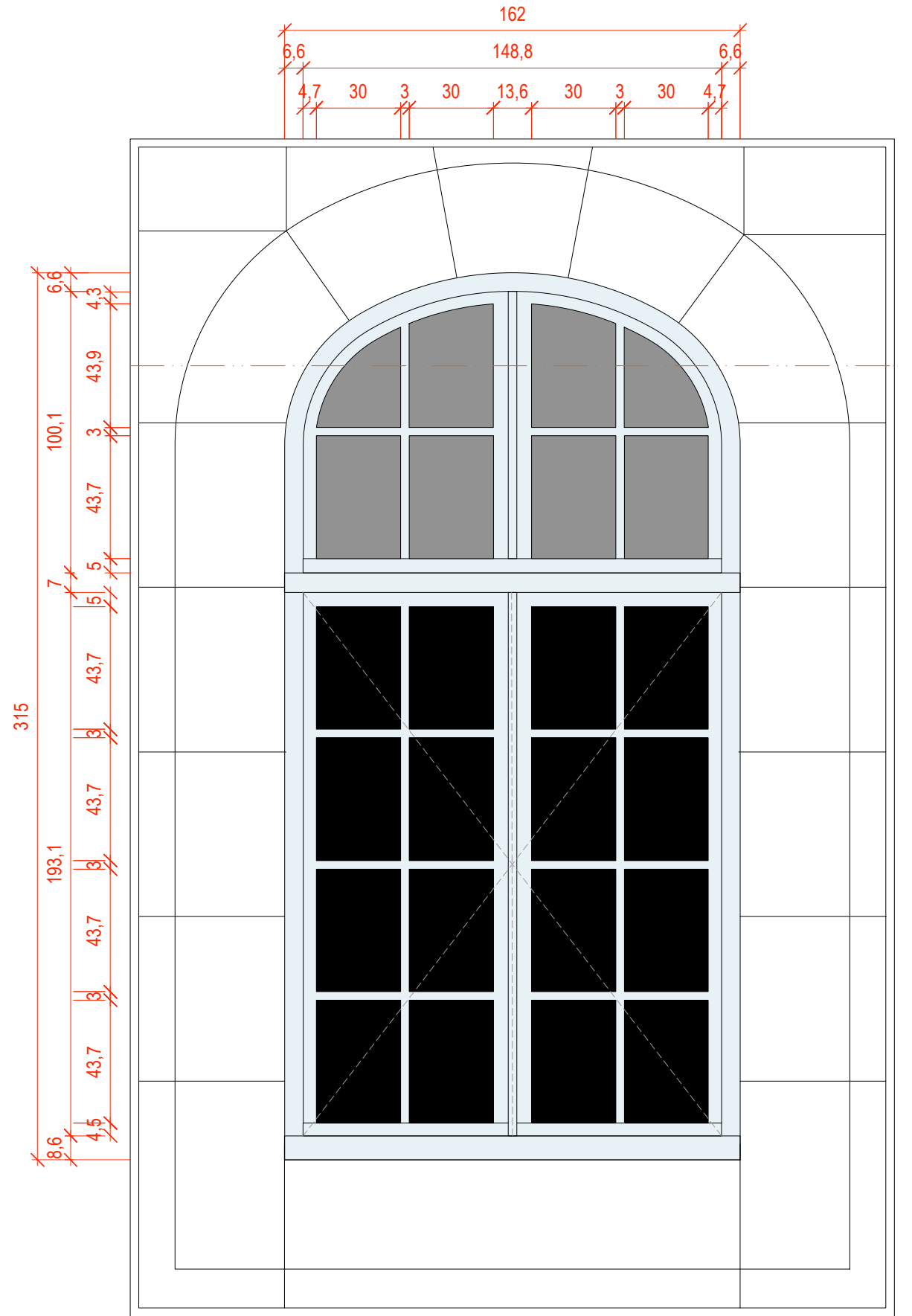
ETAT EXISTANT - COUR OUEST FACADE EST

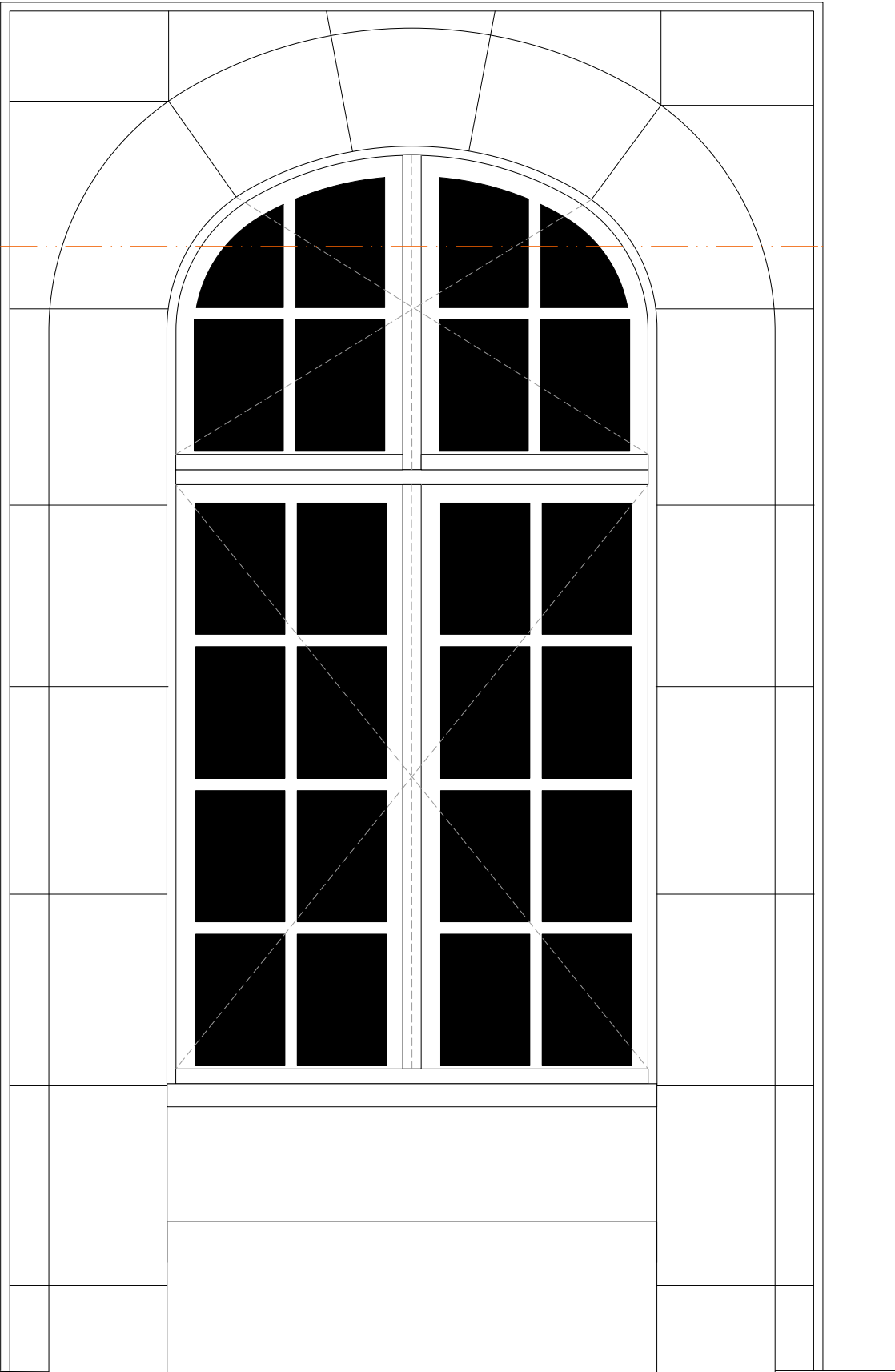


OE-01 OB Châssis Bois
Teinte P0623 de Polycrom
Dimensions 162x315
Verres opaques

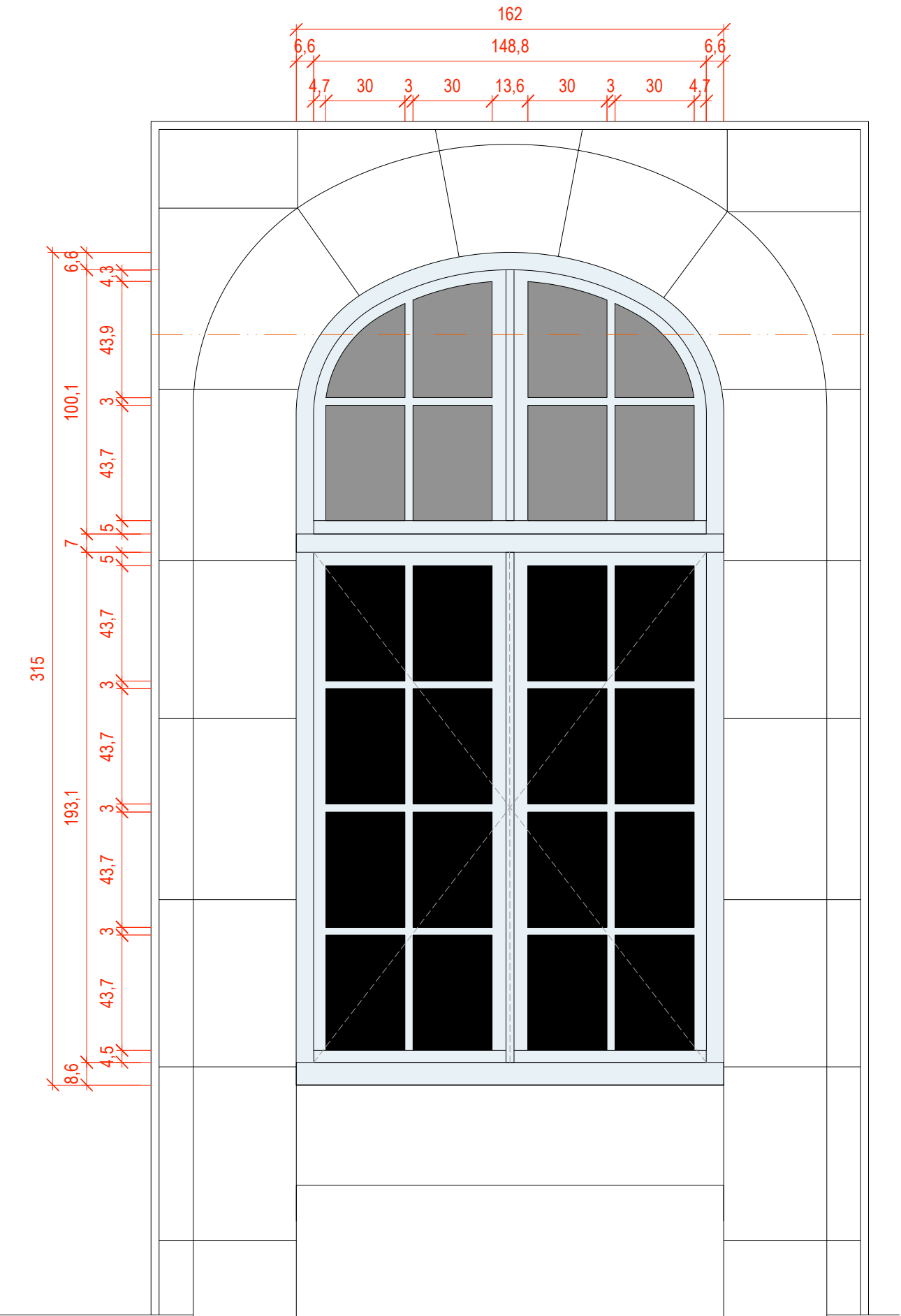
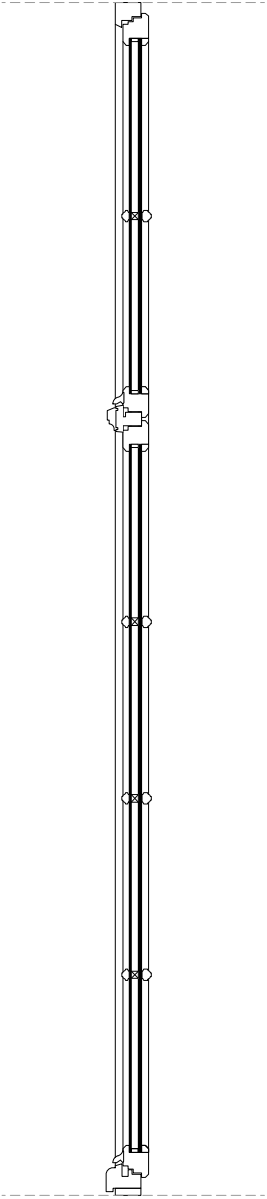


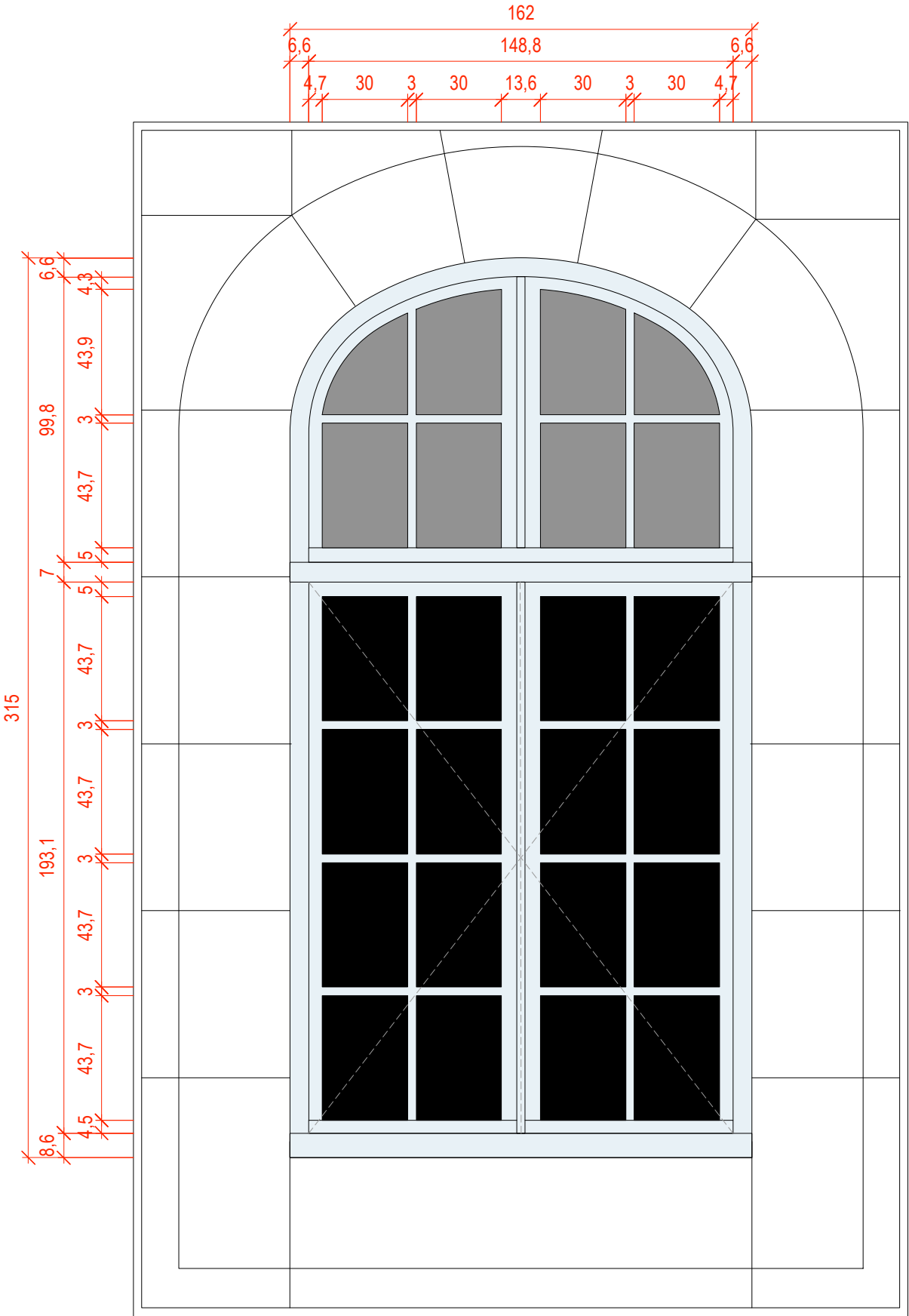
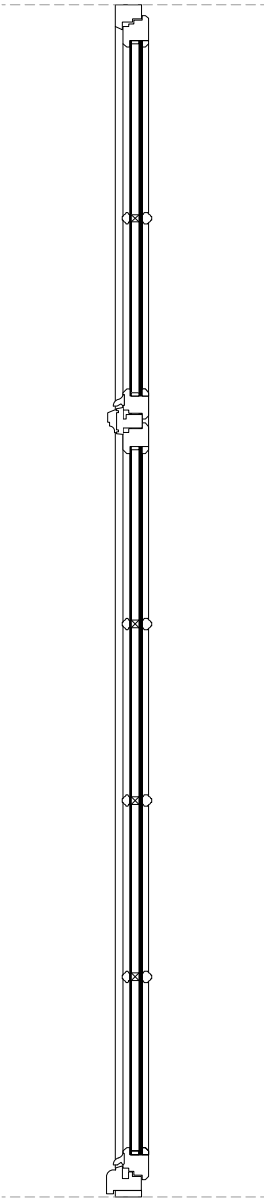
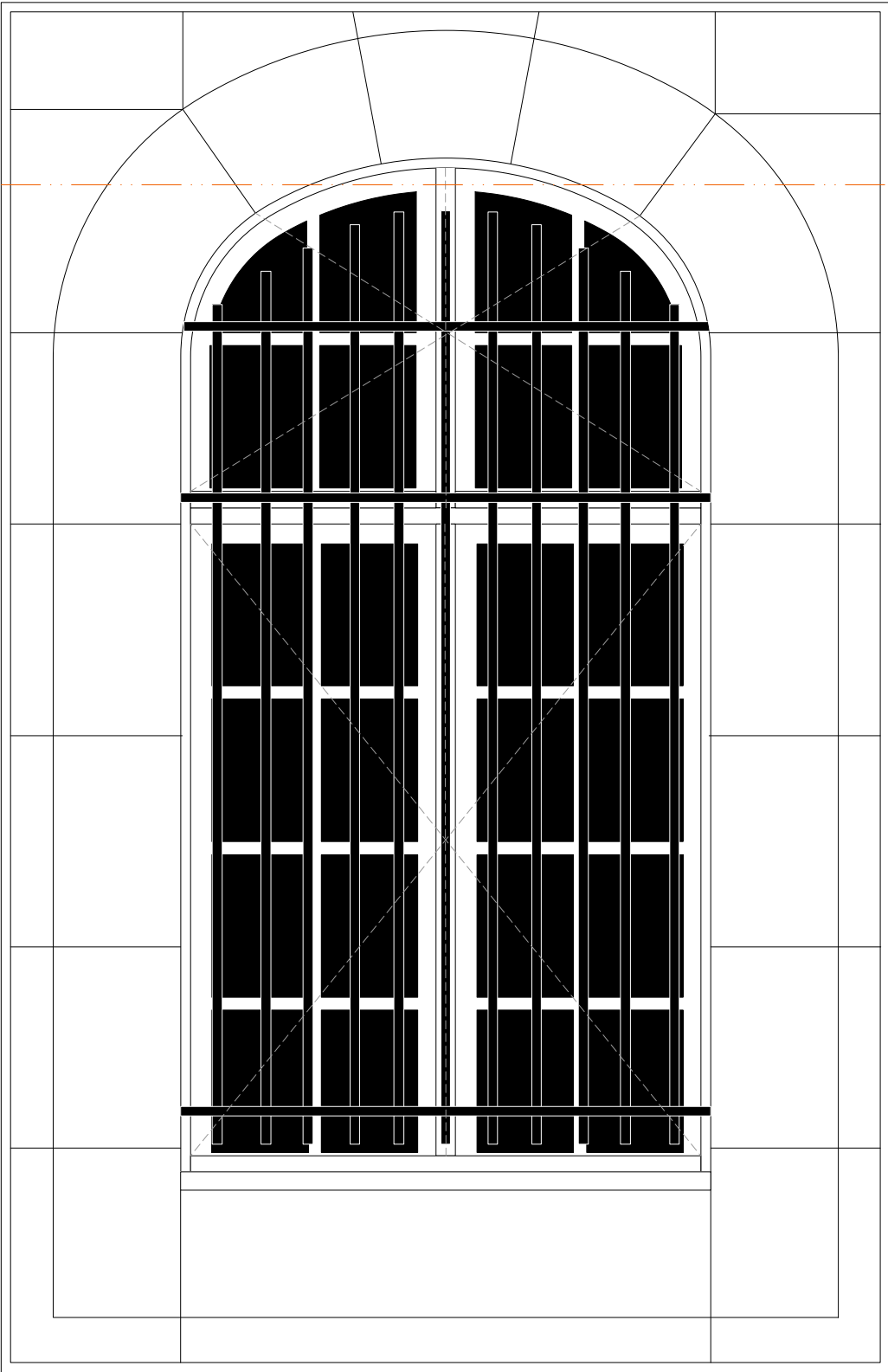
ETAT PROJETE - COUR OUEST FACADE EST

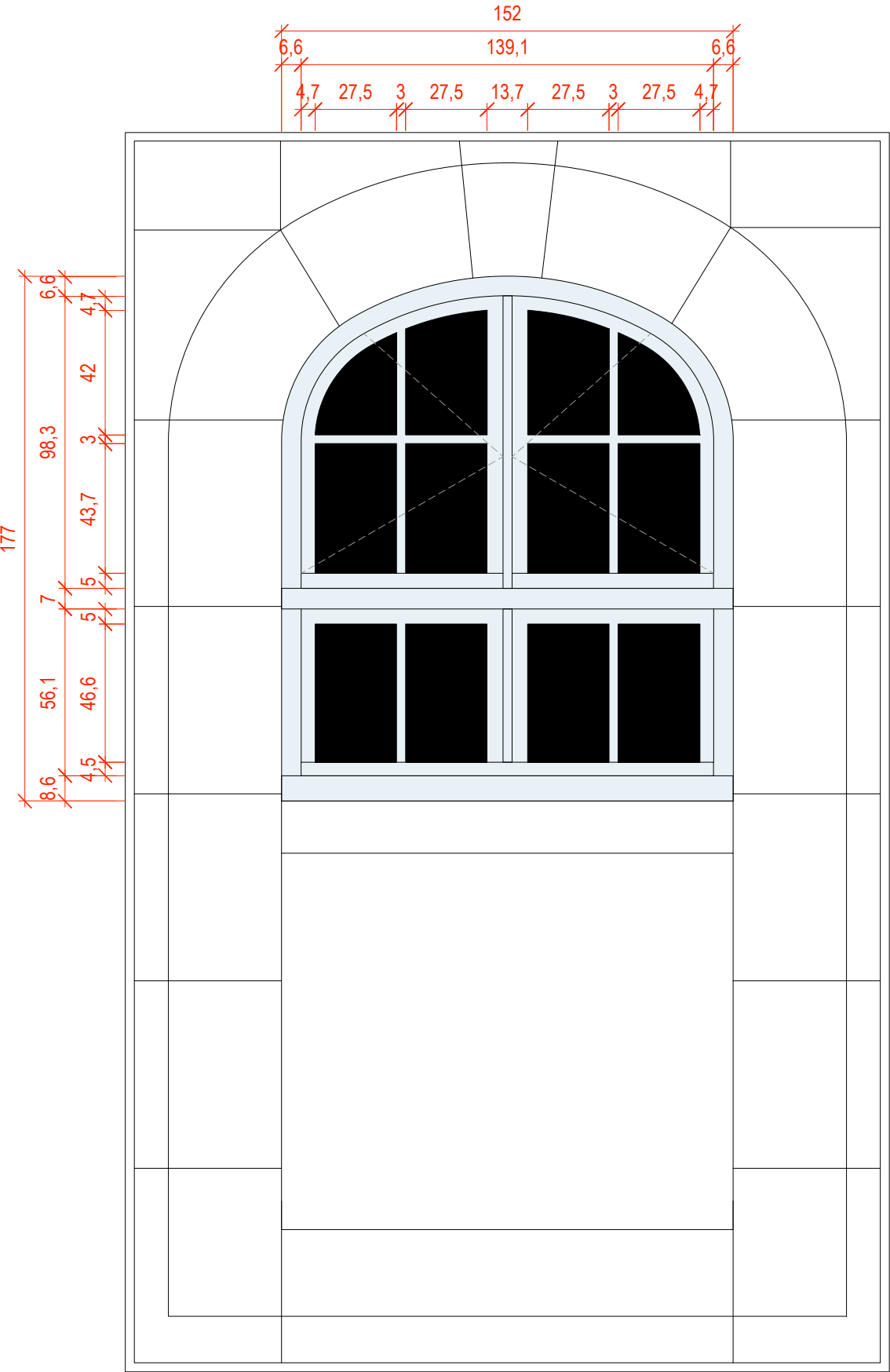
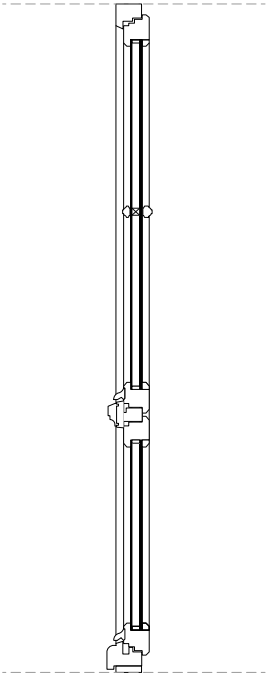
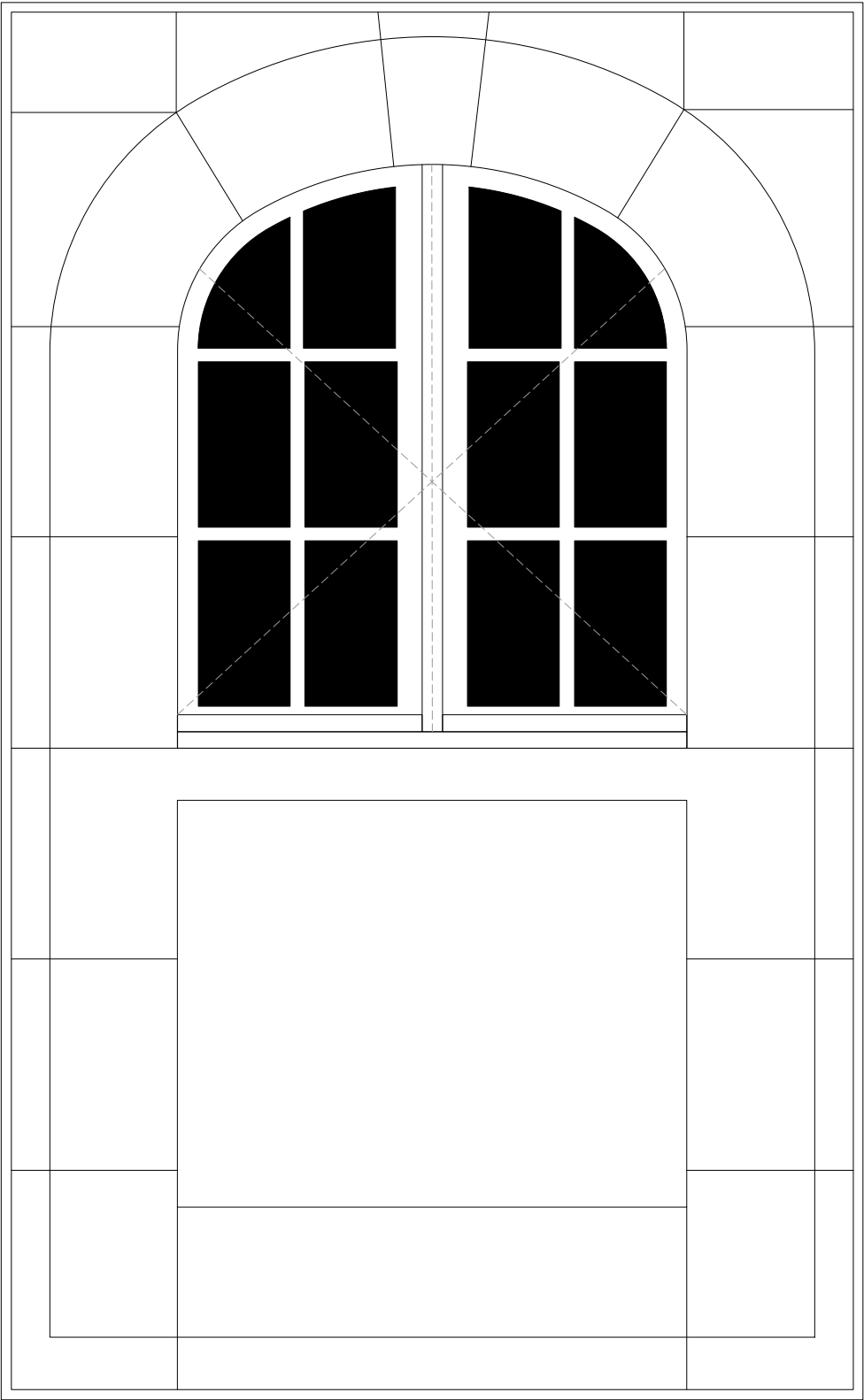




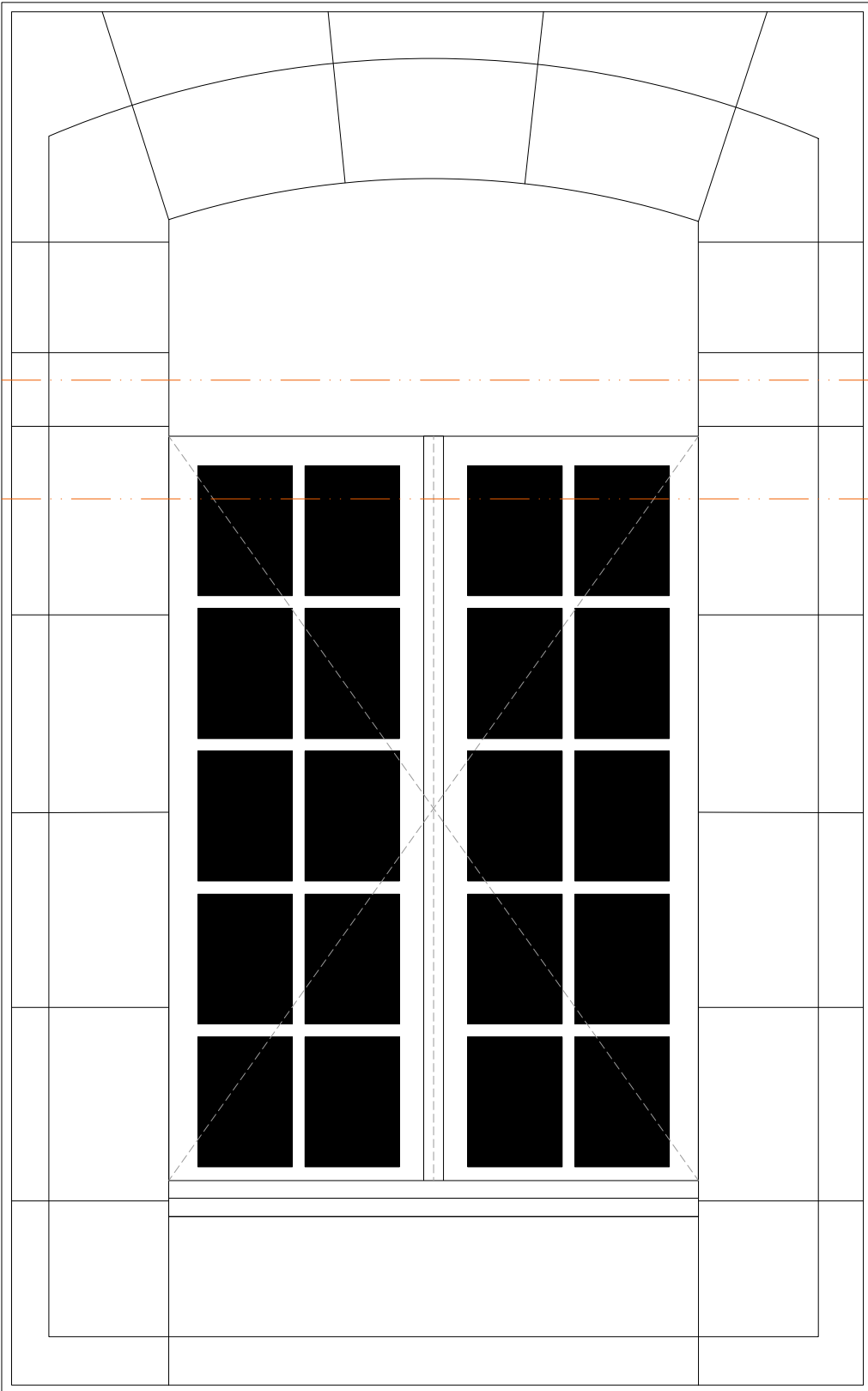
OE-02 OB Châssis Bois
Teinte P0623 de Polycrom
Dimensions 162x315
Verres opalescents



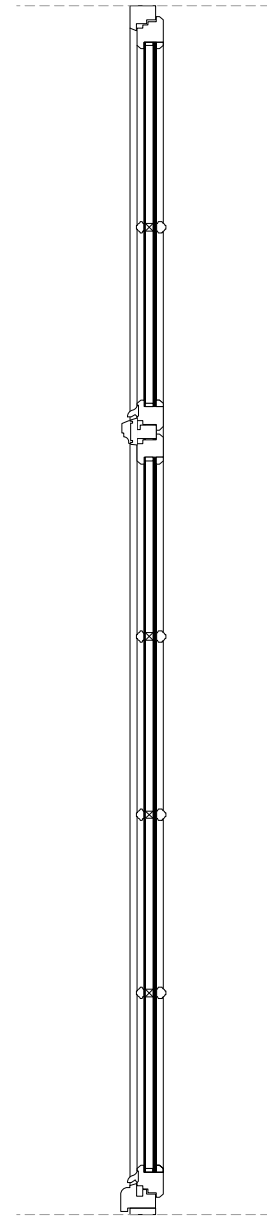




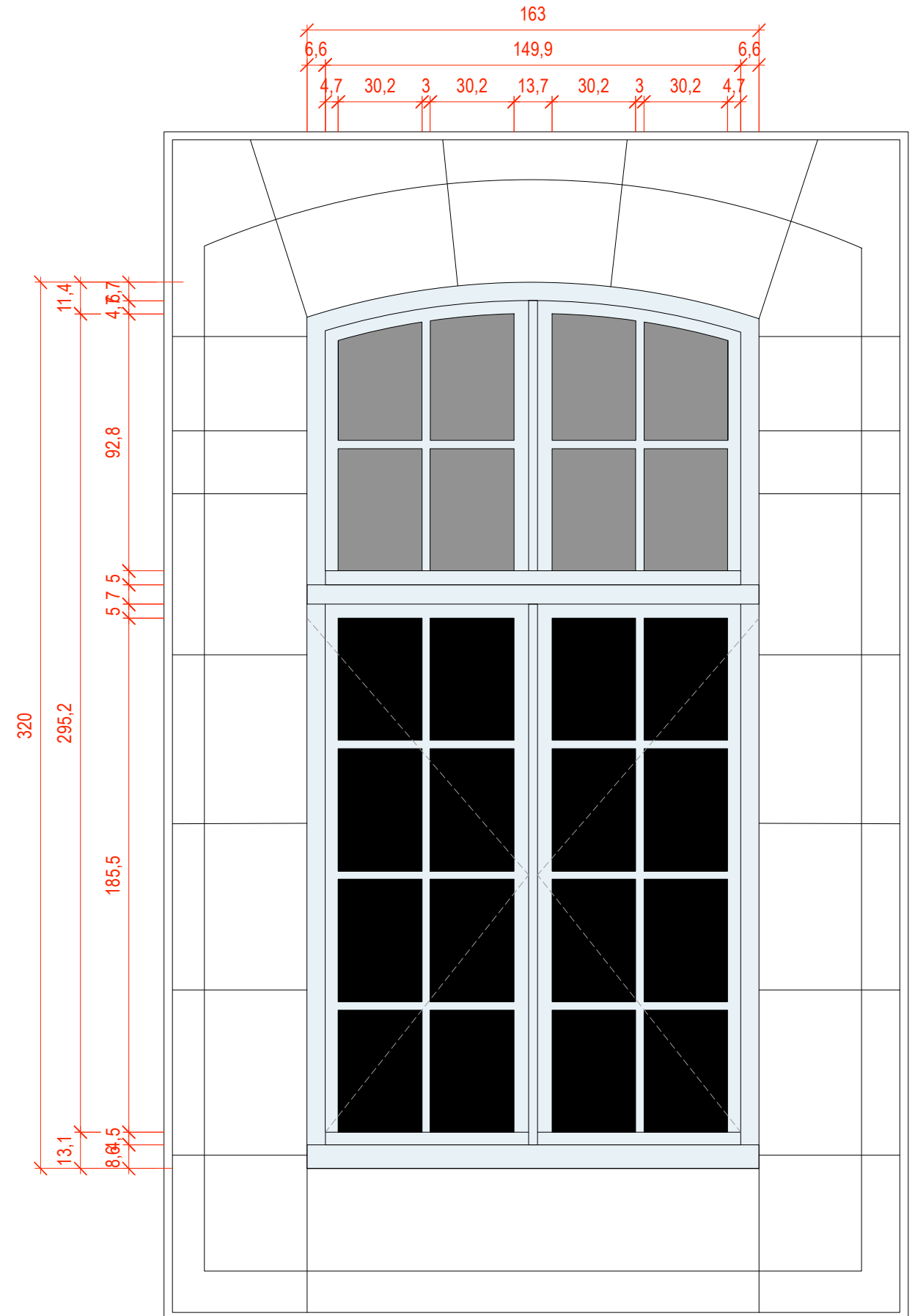
ETAT EXISTANT - COUR OUEST FACADE EST



OE-11 OB Châssis Bois
Teinte P0623 de Polycrom
Dimensions 163x240
Verres opaques

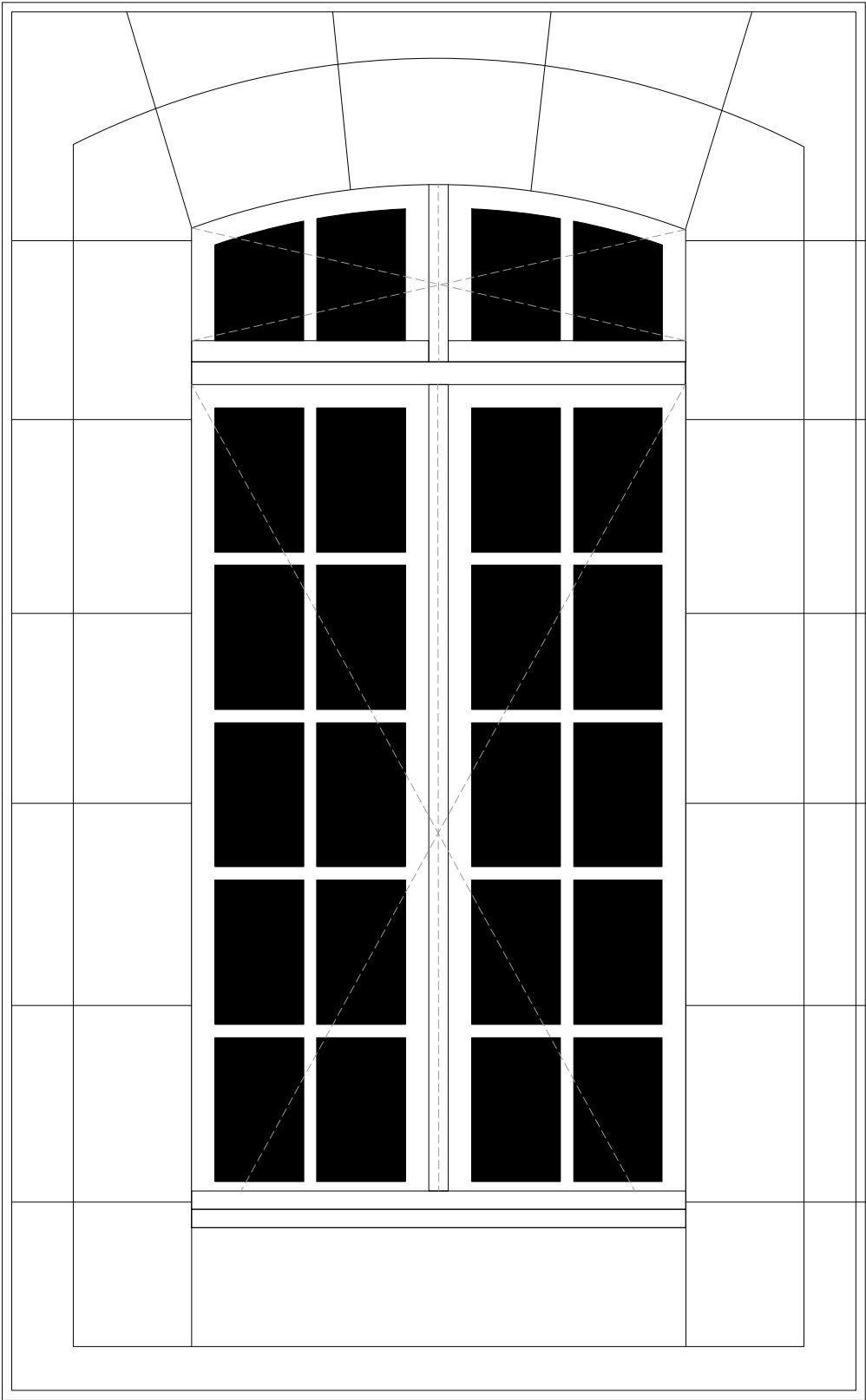


ETAT PROJETE - COUR OUEST FACADE EST

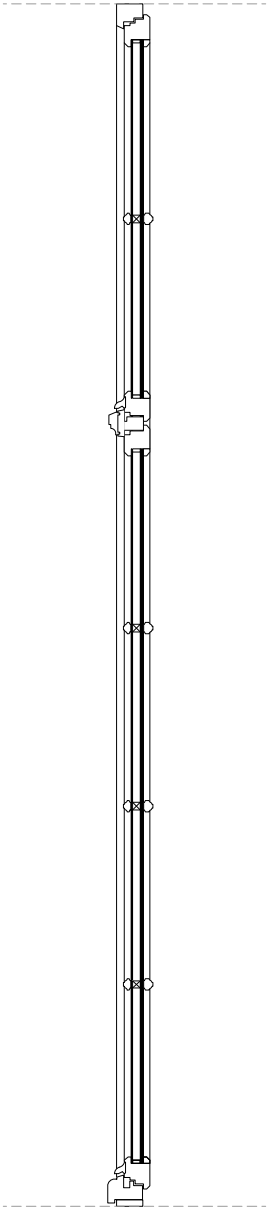


échelle 1/20e

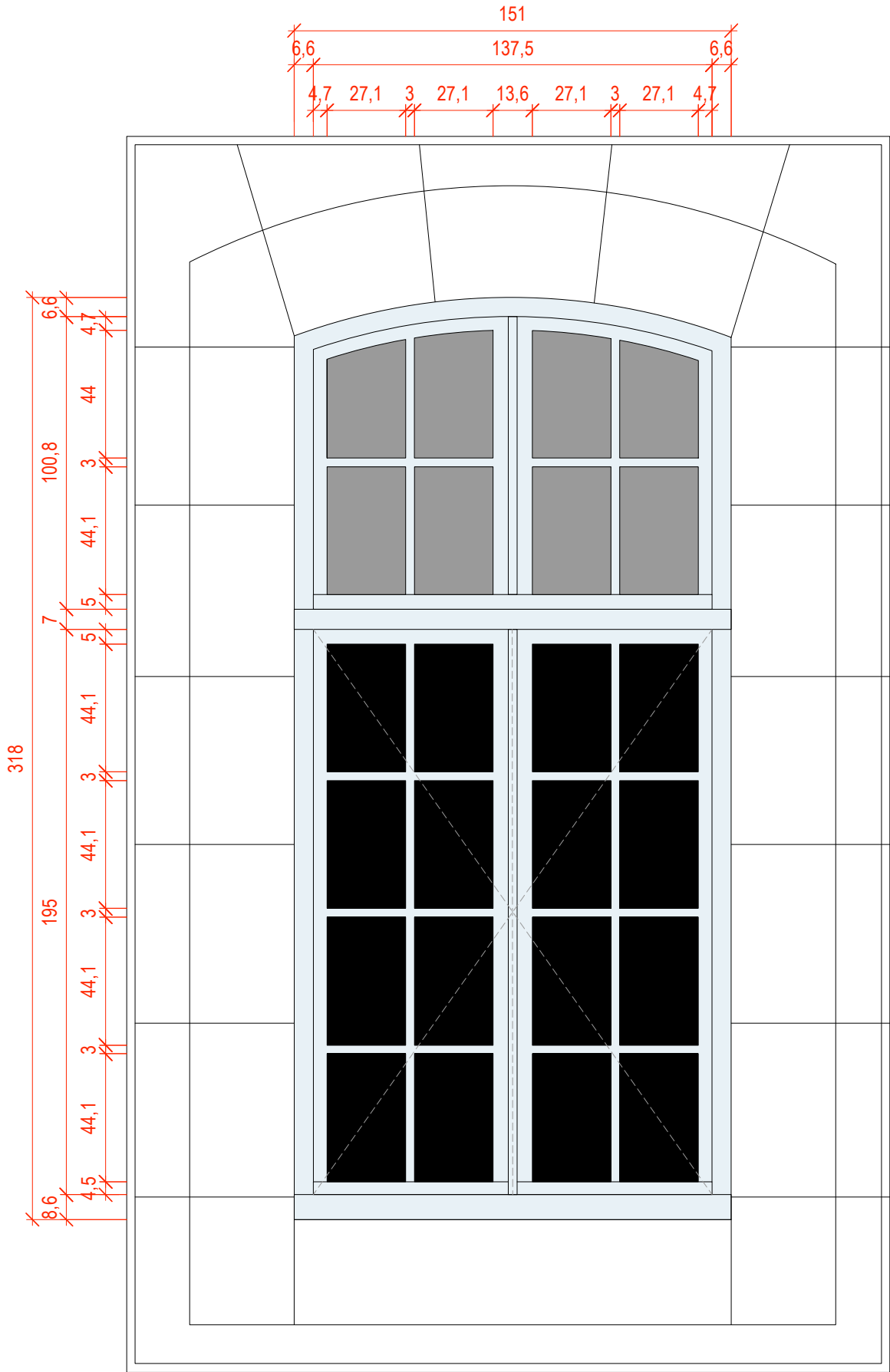
ETAT EXISTANT - COUR OUEST FACADE EST

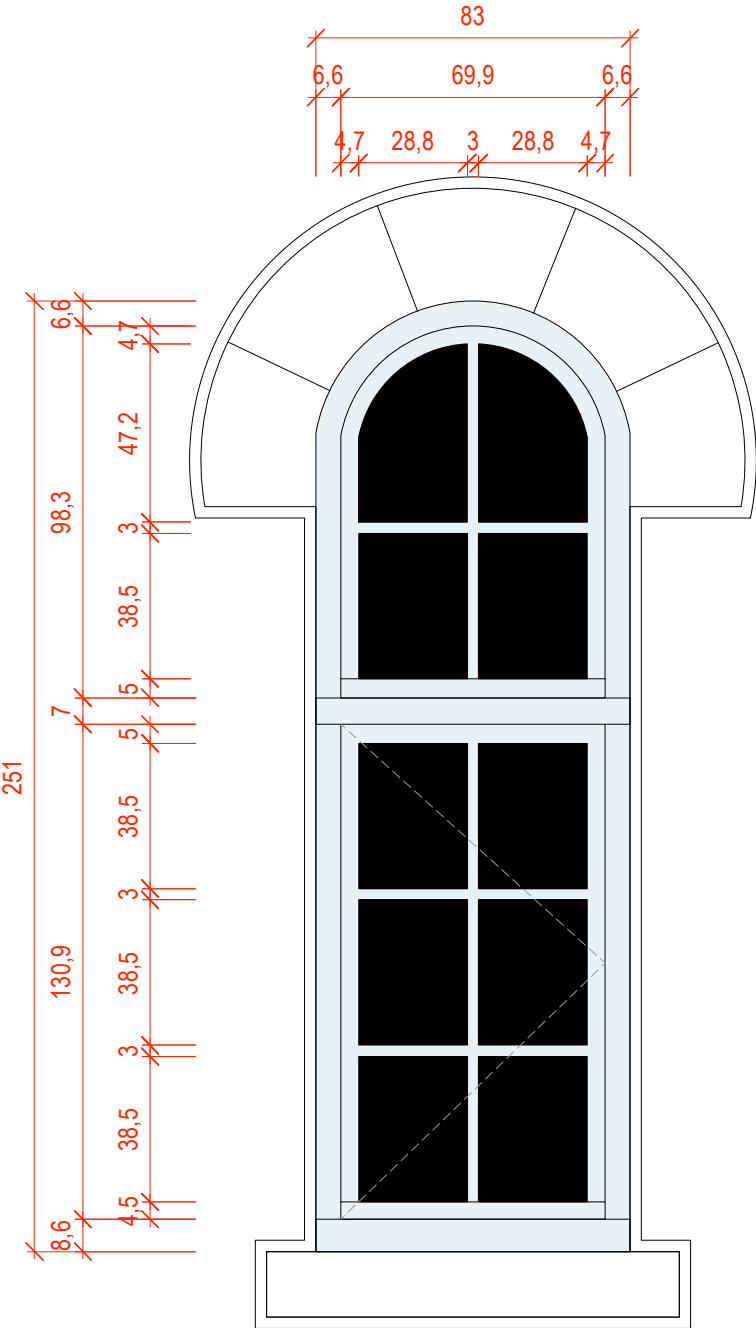
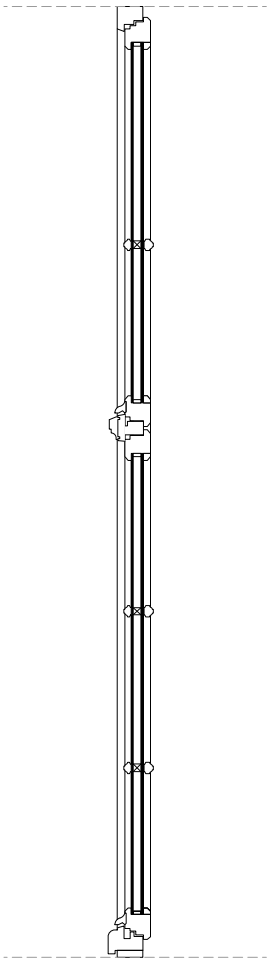
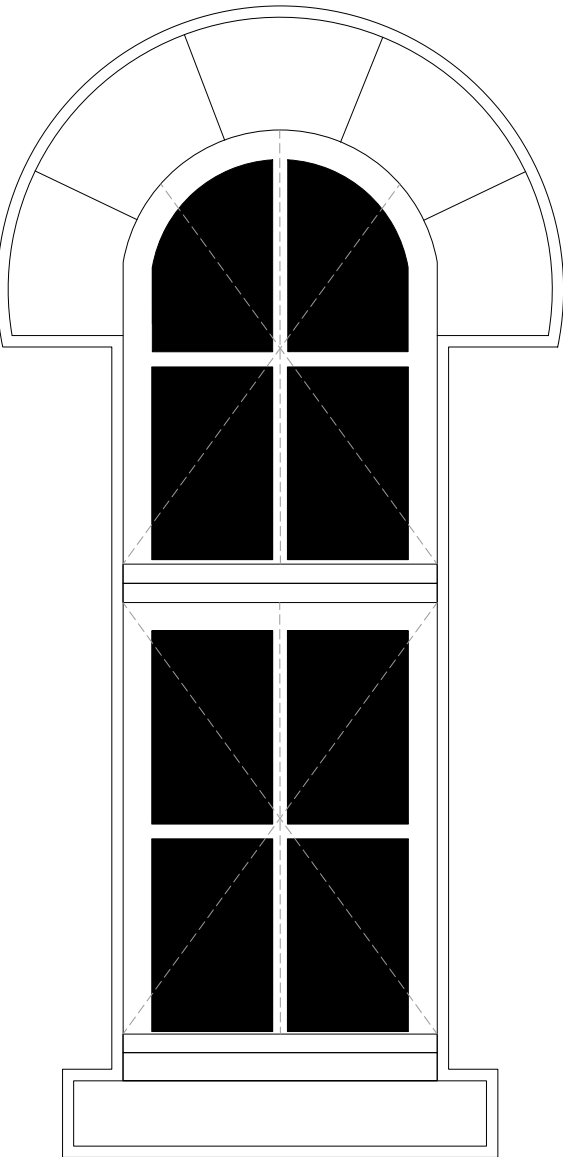


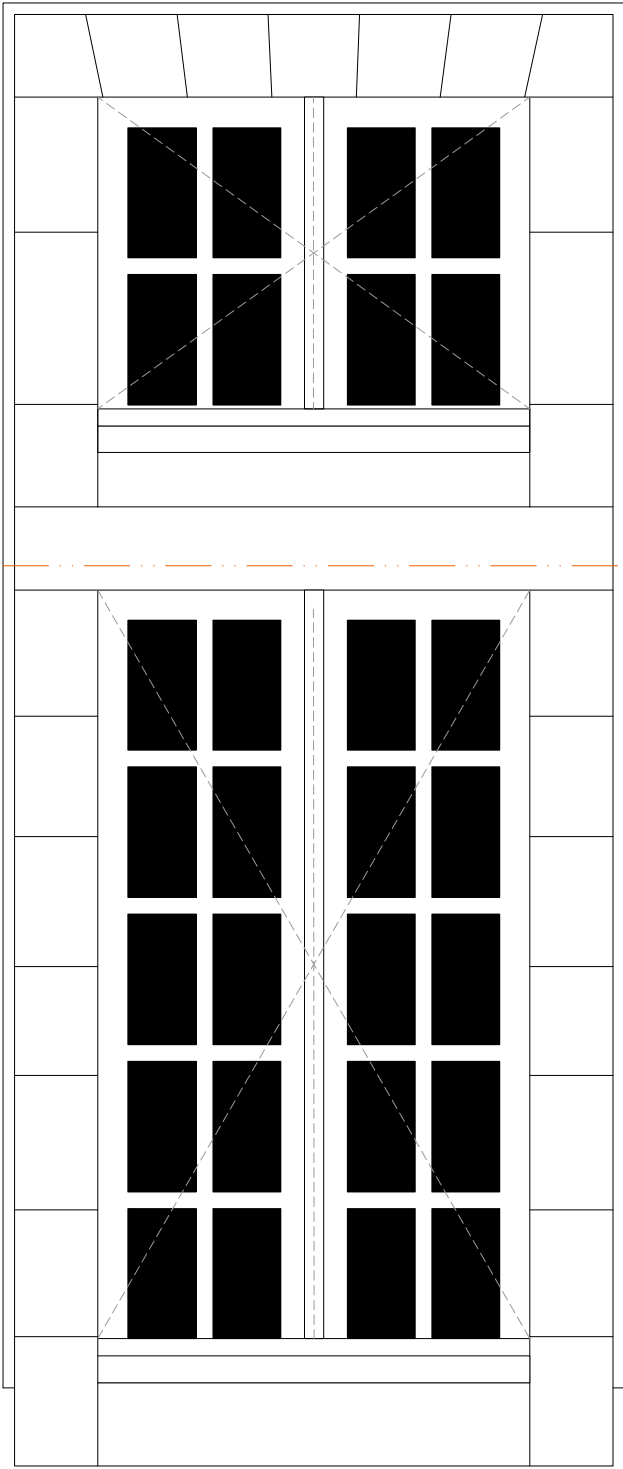
OE-12 OB Châssis Bois
Teinte P0623 de Polycrom
Dimenssions 151x318



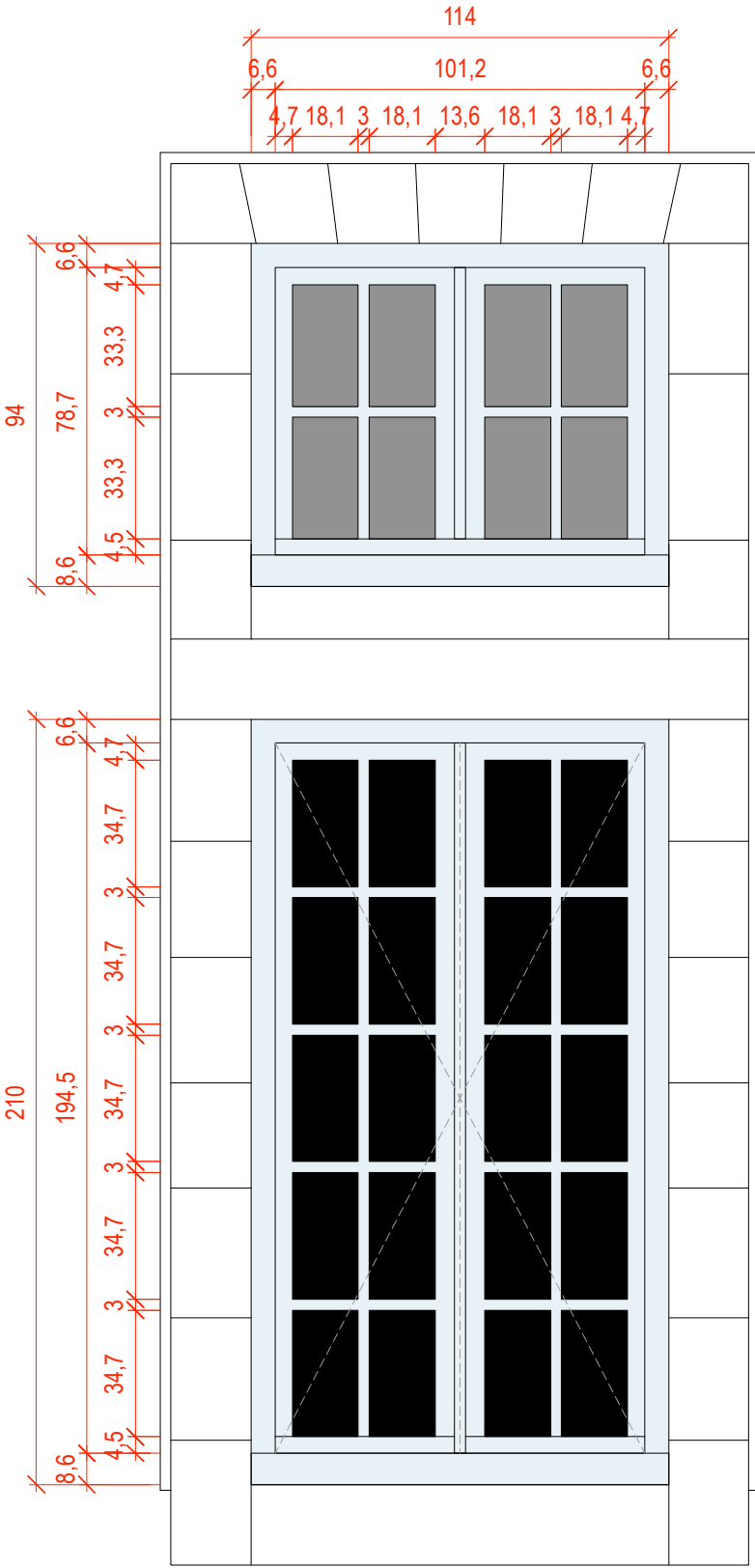
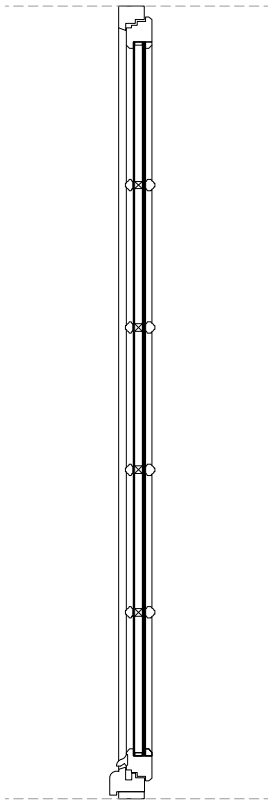
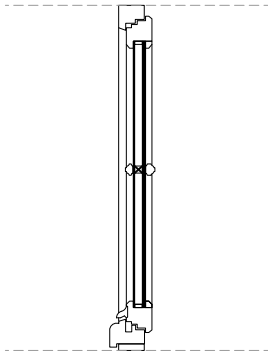
ETAT PROJETE - COUR OUEST FACADE EST



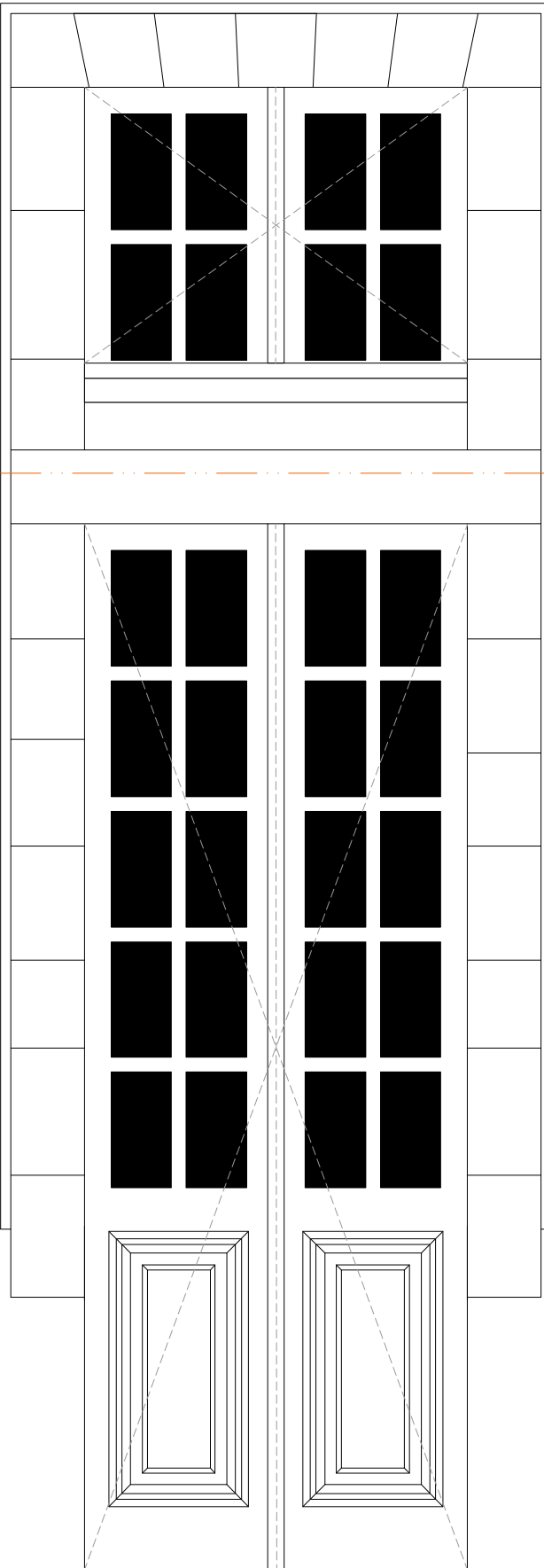




OS-01 B Châssis Bois
Teinte P0623 de Polycrom
Dimenssions 114x94
114x210
Verres opalescents

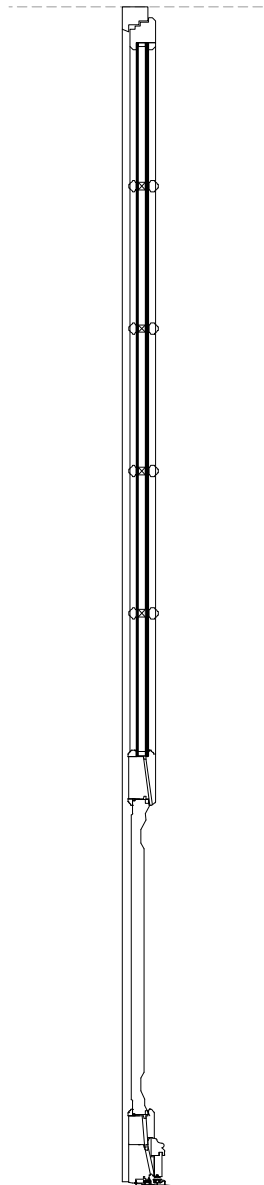
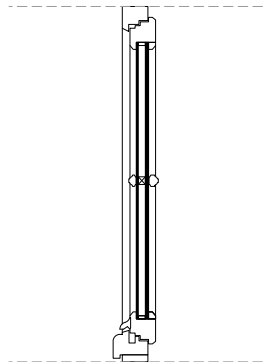


ETAT EXISTANT - COUR OUEST FACADE SUD

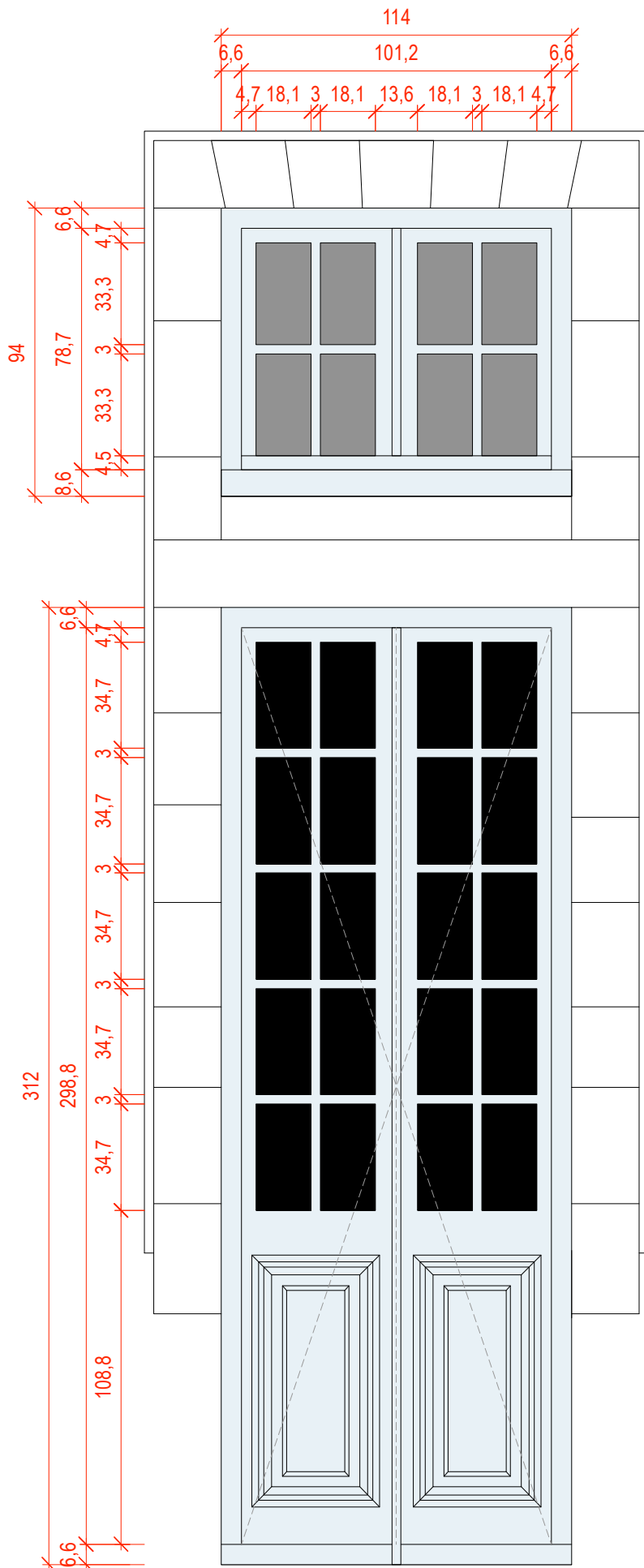


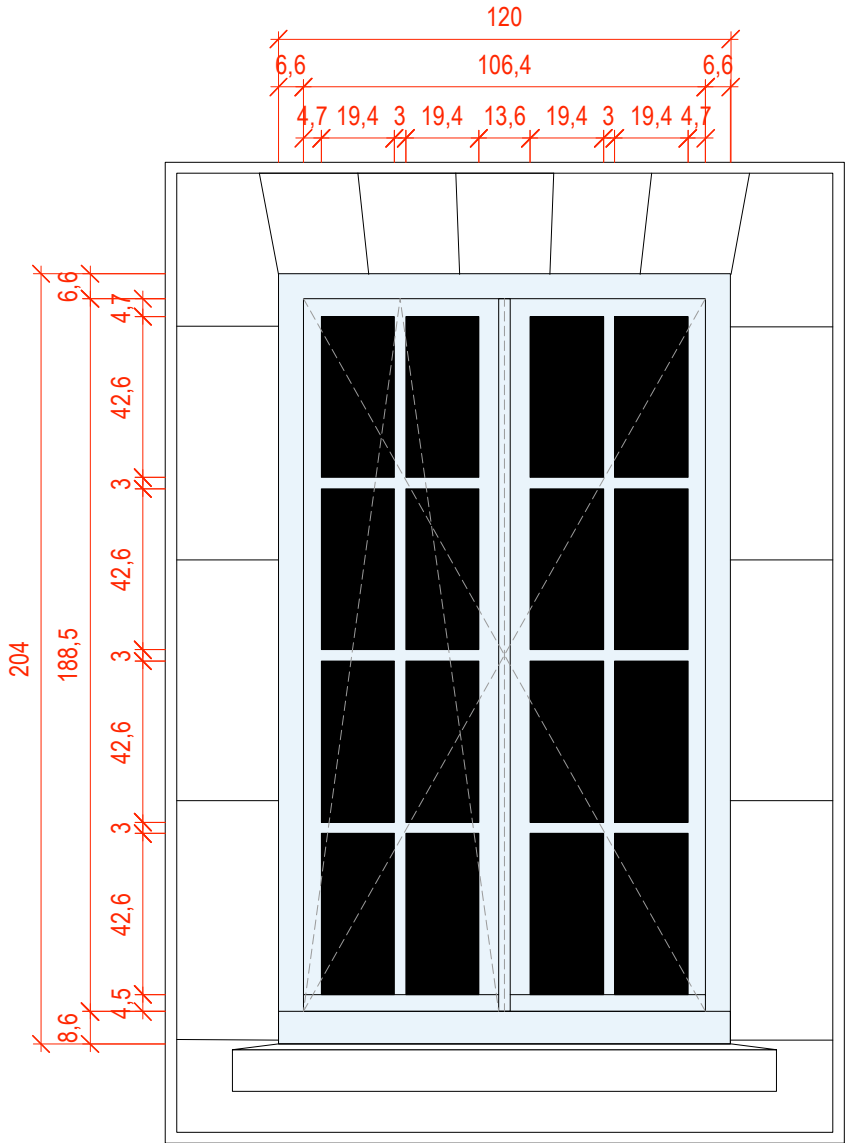
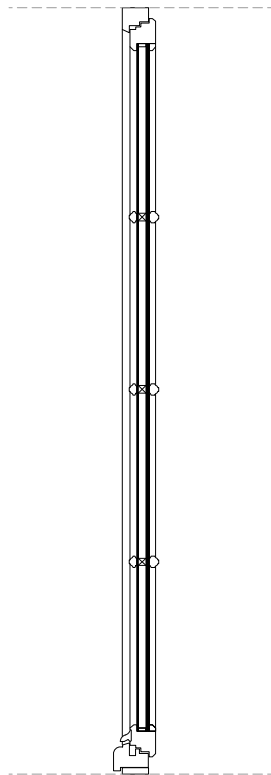
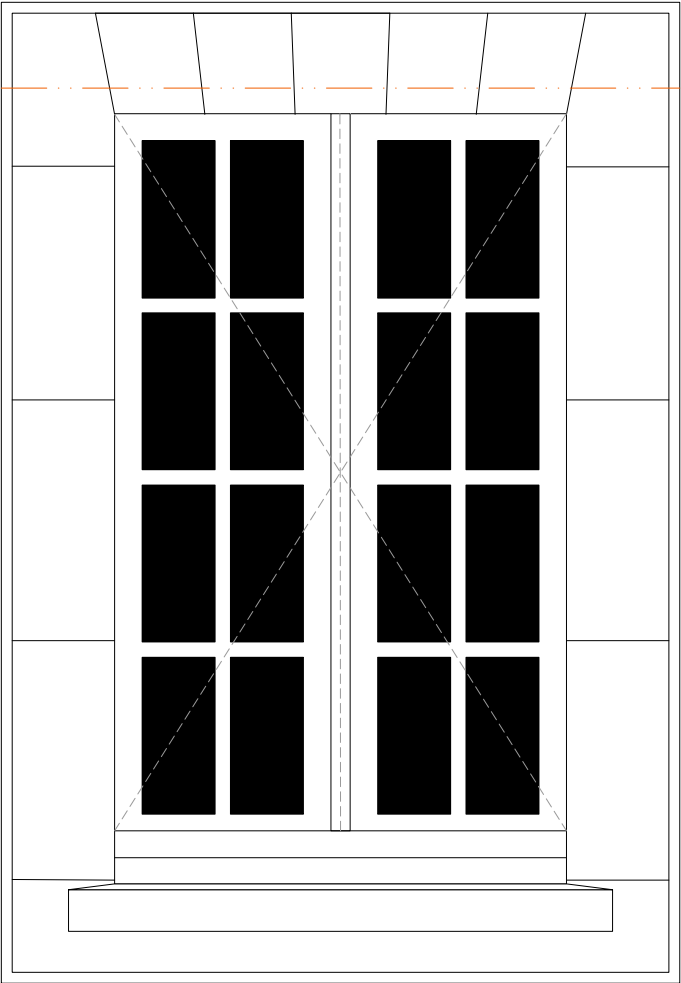
échelle 1/20e

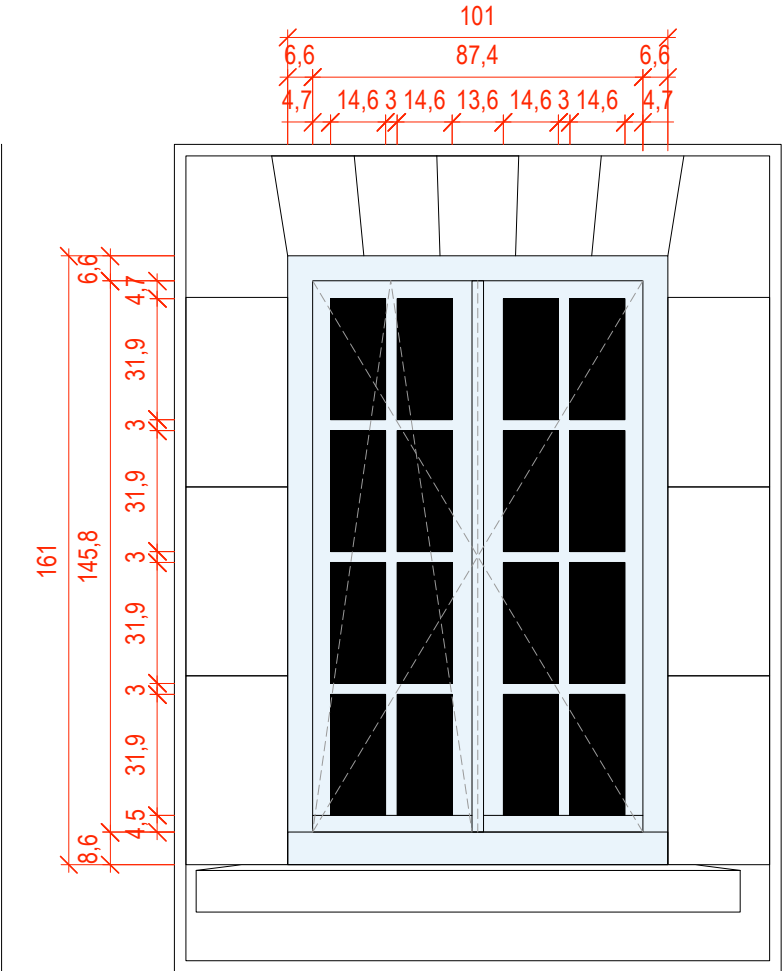
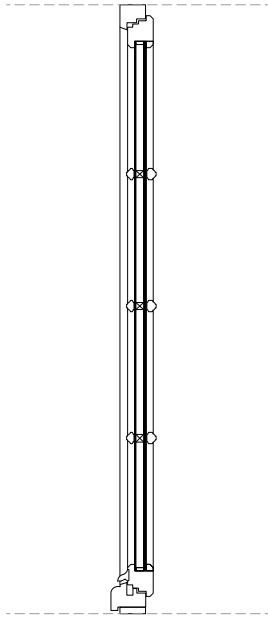
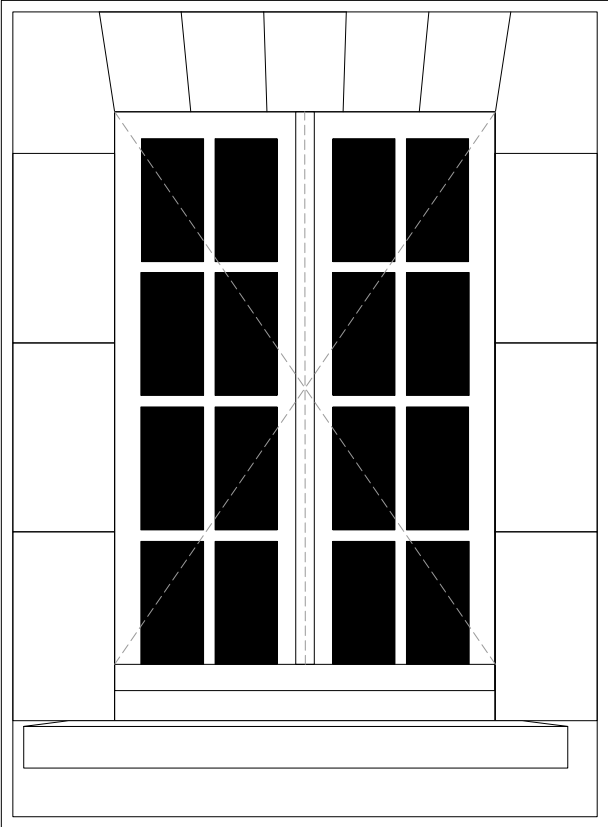
OS-02 B Châssis Bois
Teinte P0623 de Polycrom
Dimensions 114x94
114x312
Verres opalescents



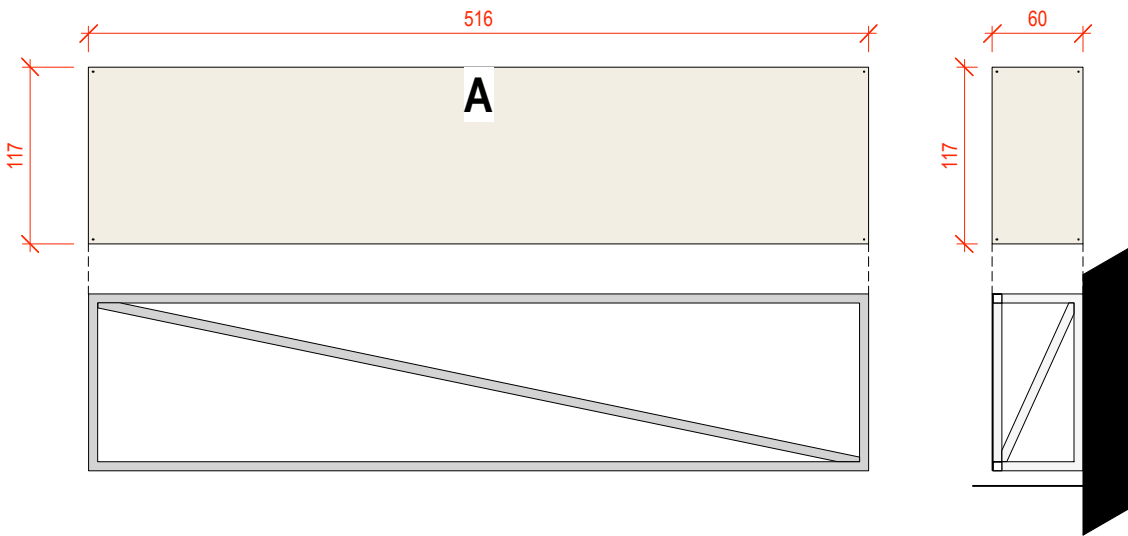
ETAT PROJETE - COUR OUEST FACADE SUD







COUR OUEST FACADE EST :
Tôle perforée en face avant fixée sur cadre tubulaire en acier
faces latérales en tôle pleine
Fixation du cadre à 10cm du sol



COUR OUEST FACADE EST :
Tôle pleine fixée sur cadre tubulaire en acier
Fixation du cadre à 10cm du sol

COUR OUEST FACADE EST :
Tôle perforée en face avant fixée sur cadre tubulaire en acier
faces latérales en tôle pleine
Fixation du cadre à 10cm du sol

